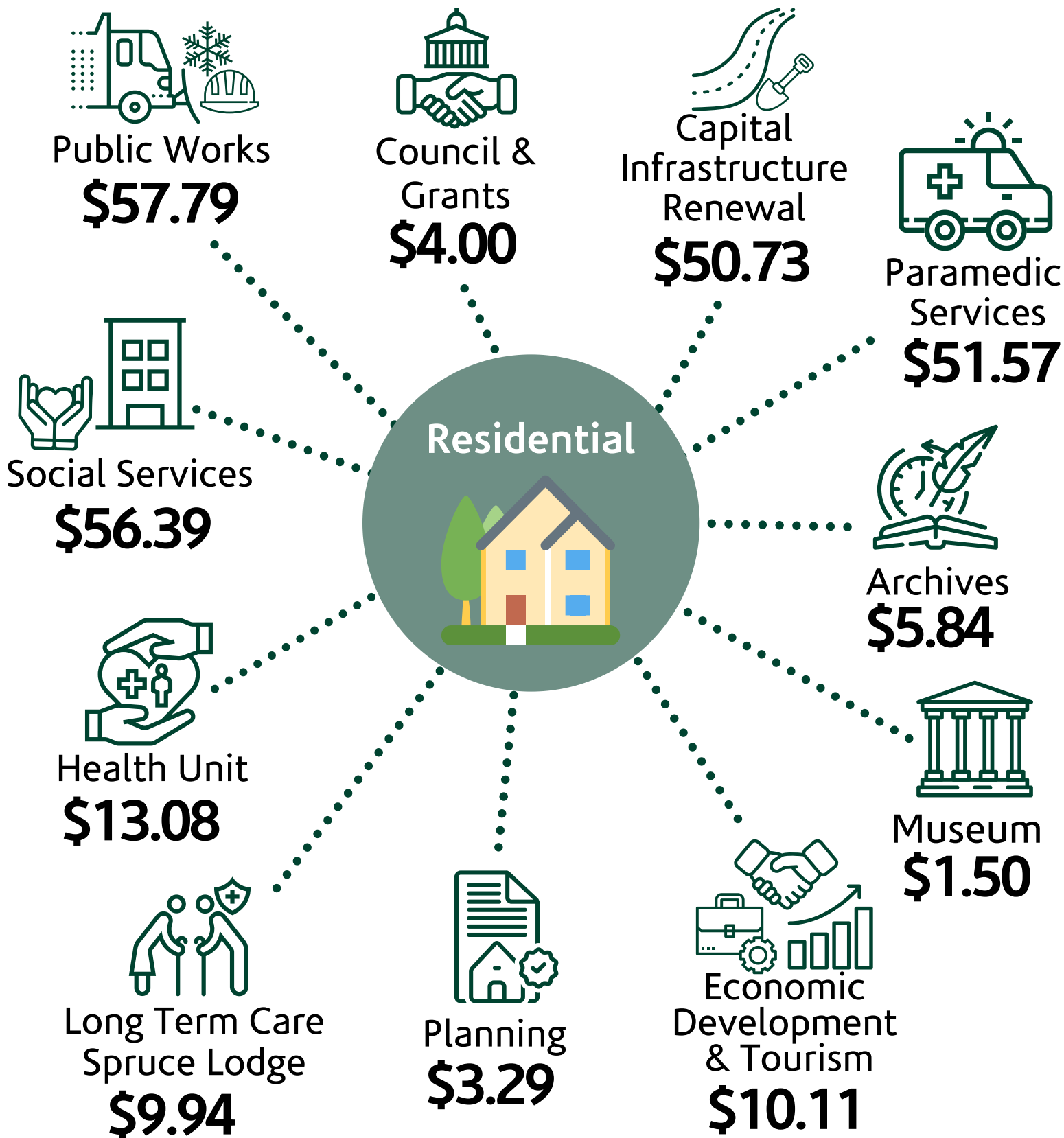
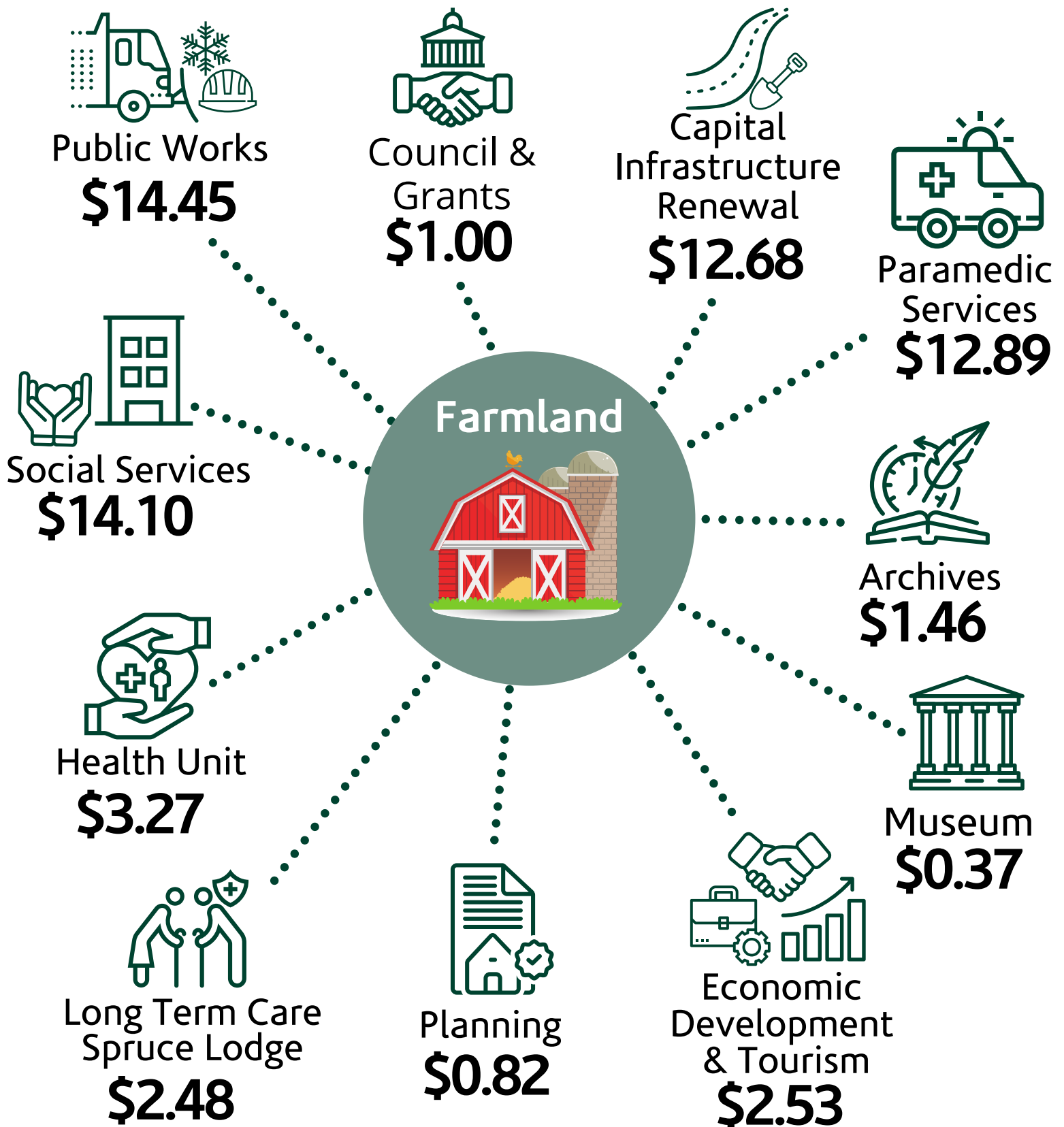


# What Makes A Budget?



\*Cost \$100,000 of assessment based on 2016 Assessment MPAC

# What Makes A Budget?



\*Cost \$100,000 of assessment based on 2016 Assessment MPAC

# Perth County Services



**Public Works**

Public Works includes Roads, Fleet and Facilities. The Roads Division is responsible for the operation and maintenance of the County's highway system (roads, bridges and all appurtenances associated with this system). Roads Division is further subdivided into Summer Maintenance, Winter Maintenance and Capital Projects. Fleet Division maintains all County vehicles. Facilities Division maintains, repairs, and operates County Facilities.



**Capital Infrastructure Renewal**

Perth County Paramedic Services provides pre-hospital care within the legislative guidelines and regulations to all seven Municipalities within the County of Perth.



**Paramedic Services**

The Planning and Development Department provides day to day planning services for both the County and each of the County's 4 member municipalities. The Department administers the County's Land Division Committee which makes decisions on applications to divide land, or grant easements under sections of the Planning Act as well as the Forest Conservation By-law.



**Planning**

Economic development activities include initiatives aimed at retaining existing businesses and creating a business environment that will enable local businesses to expand and prosper. These activities include, investment attraction, partnerships, entrepreneurship, quality of life, workforce development, downtown revitalization and tourism development



**Economic Development & Tourism**

The Stratford-Perth Archives identifies, acquires, preserves and promotes access to municipal government and local community archival records documenting the history of Perth County, it's member municipalities and the City of Stratford.



**Museum**

The Stratford Perth Museum is a not-for-profit dedicated to the preservation and celebration of the rich material and cultural heritage of the County of Perth and the City of Stratford. The Stratford Perth Museum provides curatorial services for the artifacts and collections placed in its care, and to present public educational exhibits, programs and information which bring to life the history of the region for its citizens and visitors, in accordance with the Museum's agreement with the City and County.



**Social Services**

Huron Perth Public Health (HPPH) works with the community to promote and protect health and prevent illness, based on community need, evidence and law. Public health nurses, health inspectors, health promoters, dietitians, epidemiologists, and many other professionals promote and protect the health of our community.



**Health Unit**

Spruce Lodge is a Long Term Care Home serving those over the age of 18 years, who are dependent on the personal care and support of others on an ongoing basis.



**Long Term Care Spruce Lodge**

Council expenditures relate to the remuneration, professional development, and other expenses related to the execution of the duties of the Warden and Councilors and Grants related to the annual grant program provided through the County reviewed on an annual basis during budget deliberations.



**Council & Grants**