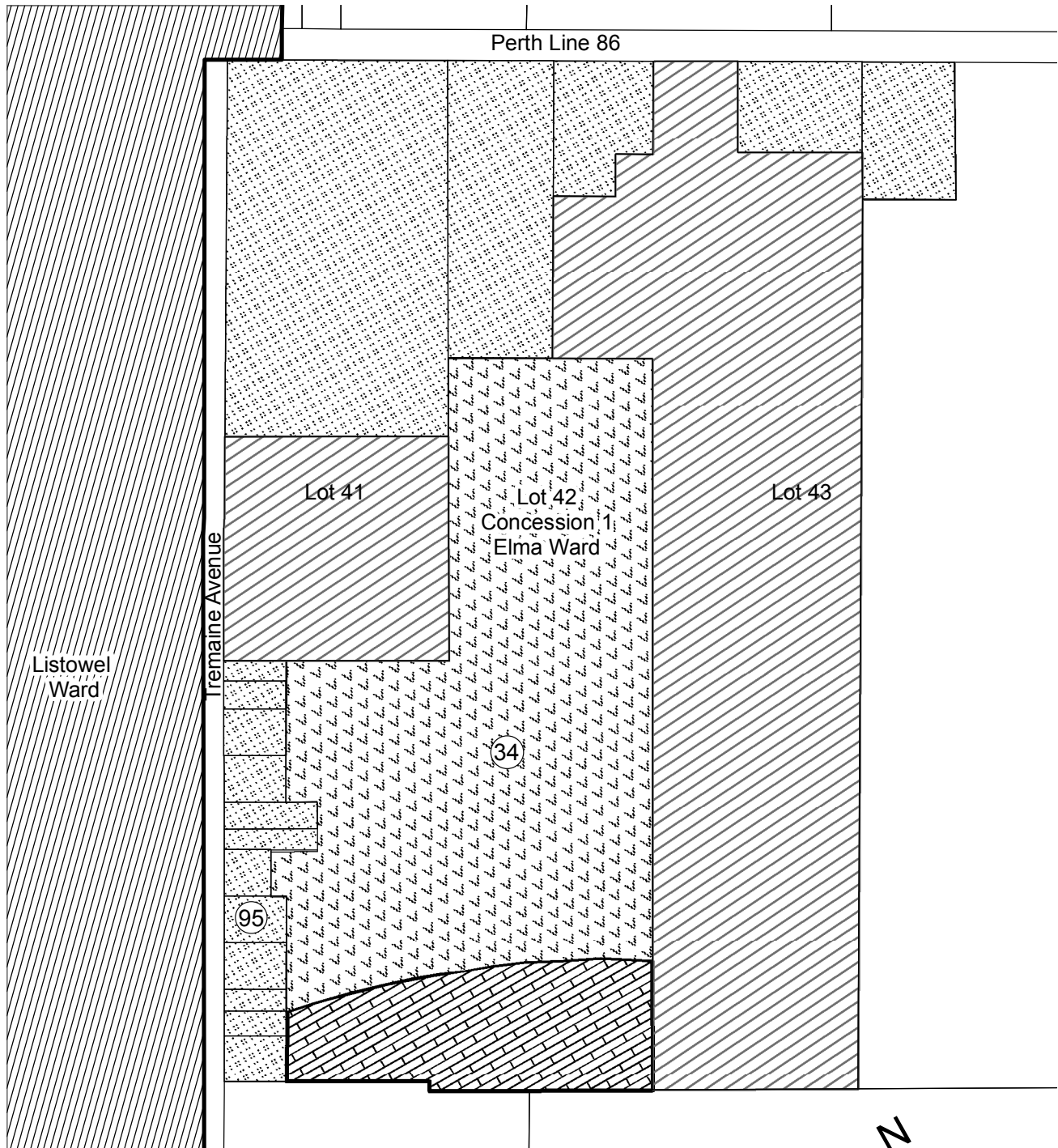


# Schedule 'A4- 2'



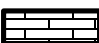

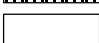
## East of Listowel

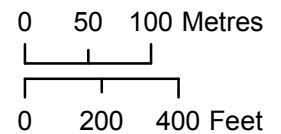
### Municipality of North Perth - Elma Ward

AMENDED BY OPA: 34  
95



#### Legend

-  Mobile / Modular Home Park
-  Settlement Area Special Policy Area 'A' (Section 6.6.1)
-  Potential Future Development Revised 2008
-  Urban Fringe
-  Agriculture



May 2019