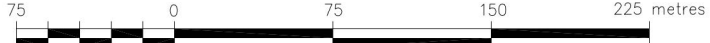
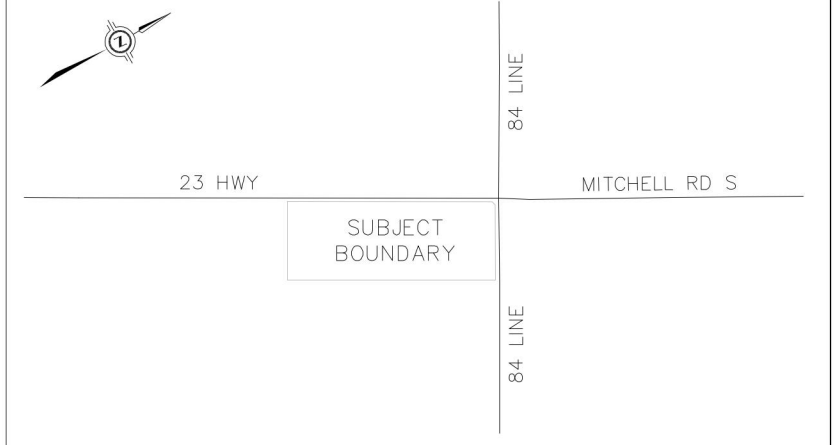


PLAN PREPARED FOR SEVERANCE APPLICATION
 7877 PERTH ROAD 164
 TOWNSHIP OF ELMA
 COUNTY OF PERTH
 SCALE 1:3500

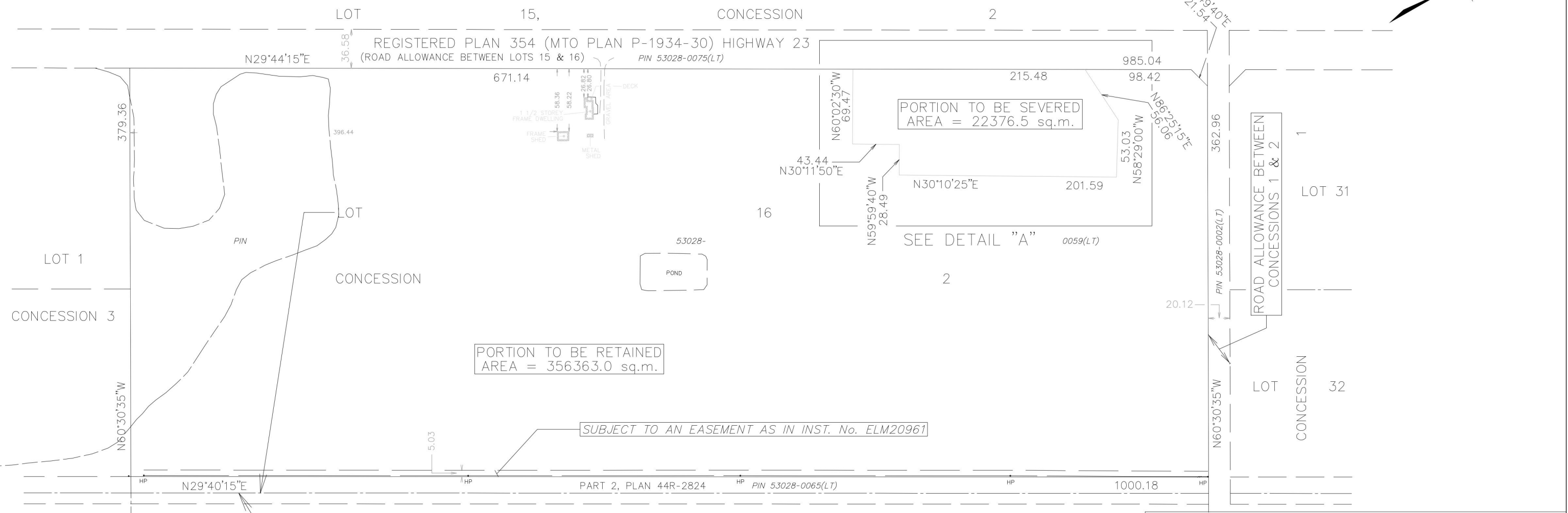


J.D. BARNES LIMITED
 DISTANCES AND/OR COORDINATES SHOWN ON THIS PLAN ARE IN METRES AND CAN BE CONVERTED TO FEET BY DIVIDING BY 0.3048.
NOTES
 DISTANCES ARE GROUND AND CAN BE CONVERTED TO GRID BY MULTIPLYING BY THE COMBINED SCALE FACTOR OF 0.999564.



KEY PLAN - NOT TO SCALE

DETAIL "A"
 (NOT TO SCALE)



SEVERANCE SKETCH

LOT 33
J.D. BARNES SURVEYING MAPPING GIS
 LIMITED
 LAND INFORMATION SPECIALISTS
 4273 KING ST. E. #100, KITCHENER, ON, N2P 2E9
 T: (519) 578-2220 F: (519) 650-5625 www.jdbarnes.com

DRAWN BY: DH	CHECKED BY: JE	REFERENCE NO.: 24-40-264-00
PLOTTED: \$DATE\$	DATED: 2/16/2024	