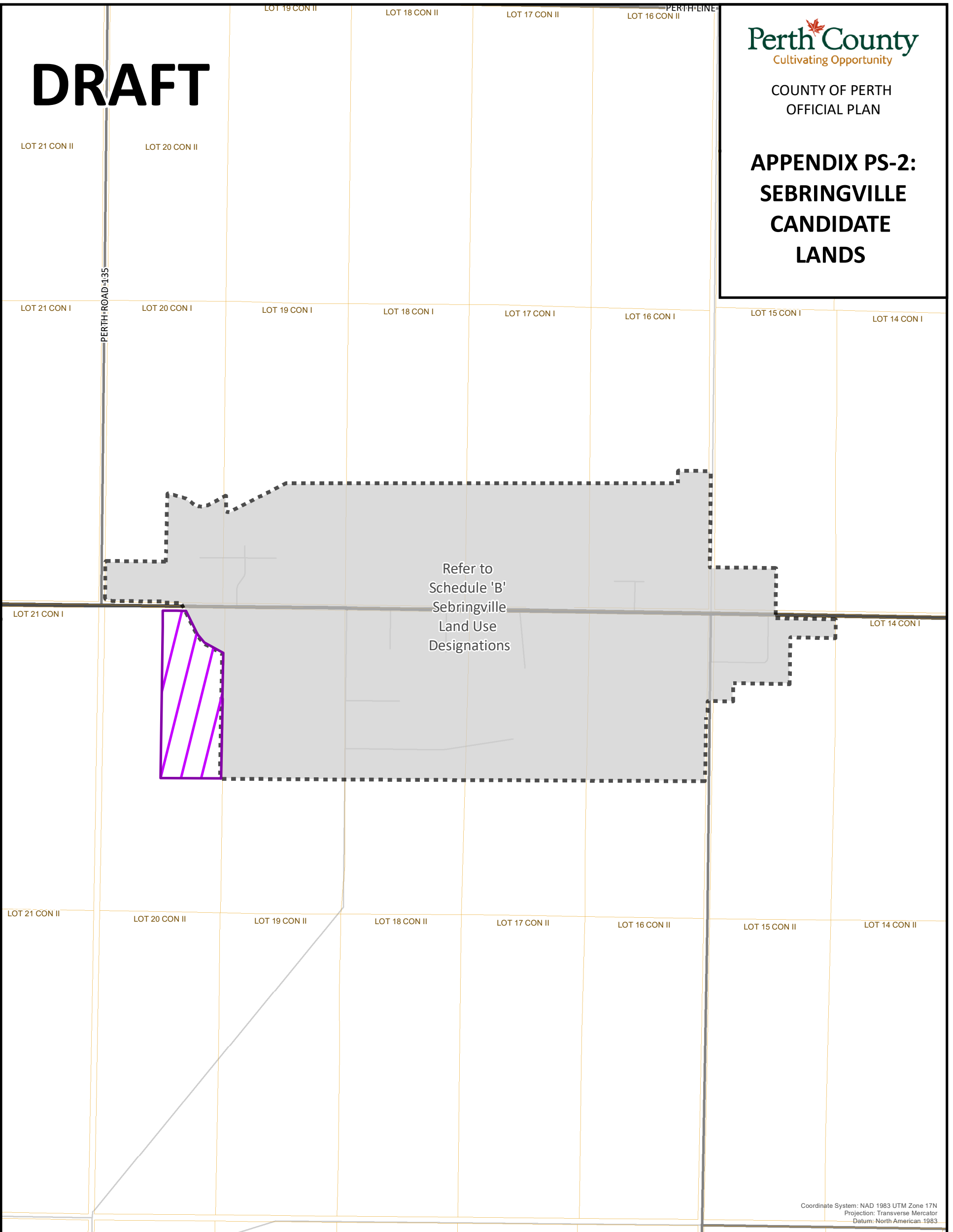




# DRAFT

**APPENDIX PS-2:  
SEBRINGVILLE  
CANDIDATE  
LANDS**







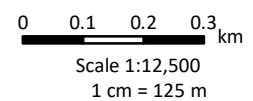
Coordinate System: NAD 1983 UTM Zone 17N  
Projection: Transverse Mercator  
Datum: North American, 1983

**LEGEND**

-  Candidate Lands
-  Settlement Area Boundary

**Additional Features**

-  Provincial Highway
-  County Road
-  Local Road
-  Lots and Concessions



This schedule forms a part of the County of Perth Official Plan and must be read in conjunction with applicable policies of the Plan. For accurate reference recourse should be had to the original document and amendments hereto. The County of Perth does not warrant the accuracy, completeness, content, or currency of the information provided. Contains information licensed under the Open Government Licence – Ontario. This is not a legal Plan of Survey. © The Corporation of Perth County, 2024.

This map may incorporate data under license from:  
© King's Printer for Ontario, 2024  
© Maitland Valley Conservation Authority, 2024  
© Upper Thames River Conservation Authority, 2024  
© Grand River Conservation Authority, 2024  
© Ausable Bayfield Conservation Authority, 2024