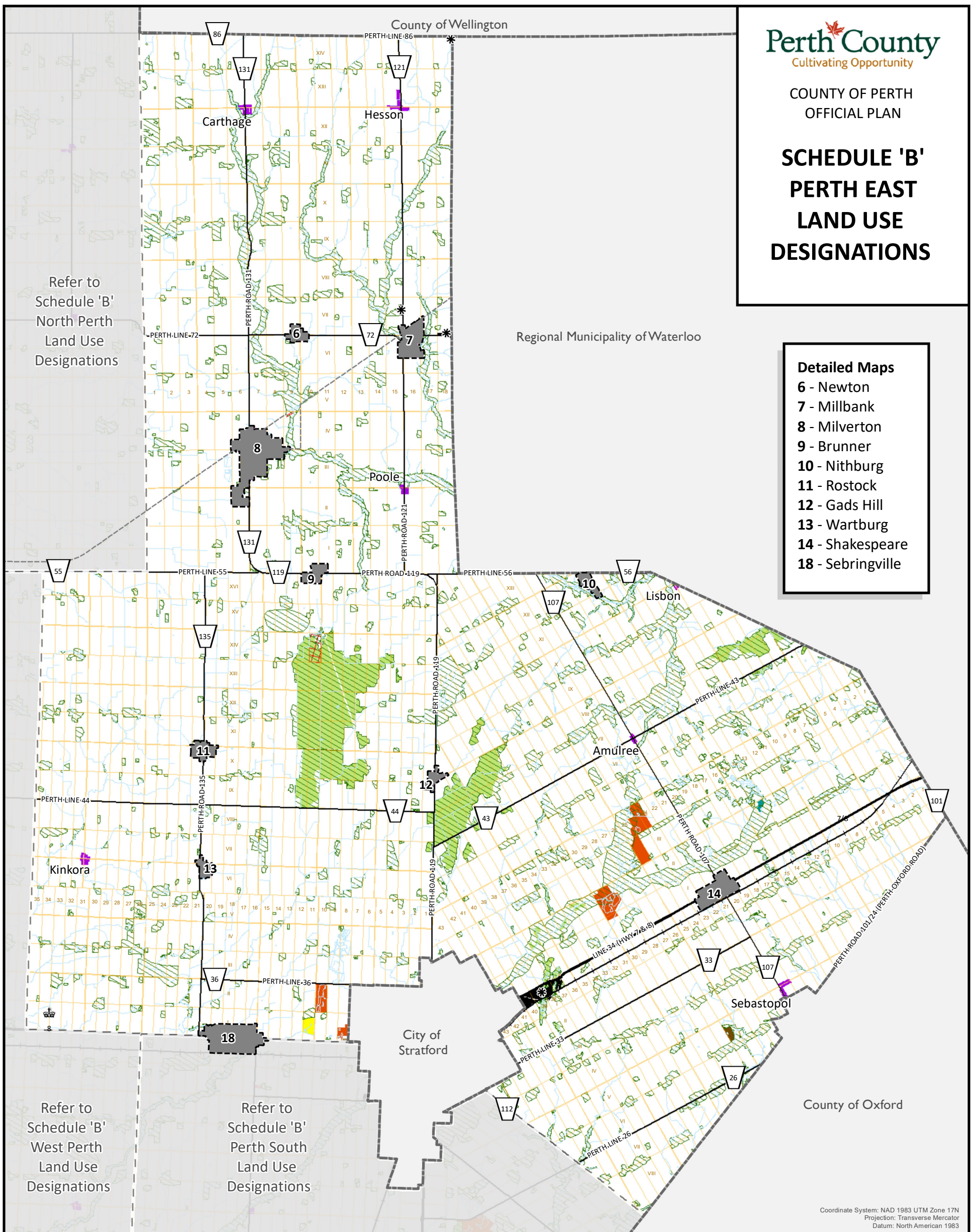


**SCHEDULE 'B'
PERTH EAST
LAND USE
DESIGNATIONS**

Detailed Maps

- 6 - Newton
- 7 - Millbank
- 8 - Milverton
- 9 - Brunner
- 10 - Nithburg
- 11 - Rostock
- 12 - Gads Hill
- 13 - Wartburg
- 14 - Shakespeare
- 18 - Sebringville



Refer to
Schedule 'B'
North Perth
Land Use
Designations

Regional Municipality of Waterloo

Refer to
Schedule 'B'
West Perth
Land Use
Designations

Refer to
Schedule 'B'
Perth South
Land Use
Designations

Coordinate System: NAD 1983 UTM Zone 17N
Projection: Transverse Mercator
Datum: North American 1983

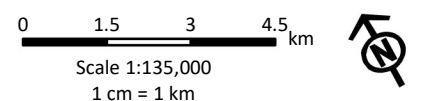
LEGEND

Land Use Designations

- | | |
|-------------------|-----------------------------------|
| Agriculture | Urban Fringe |
| Hamlet | Open Landfill |
| Mineral Aggregate | Mobile Home Parks |
| Open Space | Provincially Significant Wetlands |
| Recreation | Floodplain |
| Natural Heritage | Rural Cluster |
| | Natural Heritage Features Overlay |

Additional Features

- | | |
|-----------------------|------------------------|
| Provincial Highway | Refer to Detailed Maps |
| County Road | Waterbody |
| Railway/ Right of Way | Closed Landfill |
| Former Railway Line | Lots and Concessions |
| Watercourse | Municipal Boundary |



This schedule forms a part of the County of Perth Official Plan and must be read in conjunction with applicable policies of the Plan. For accurate reference recourse should be had to the original document and amendments hereto. The County of Perth does not warrant the accuracy, completeness, content, or currency of the information provided. Contains information licensed under the Open Government Licence – Ontario. This is not a legal Plan of Survey. © The Corporation of Perth County, 2025.

This map may incorporate data under license from:
© King's Printer for Ontario, 2024
© Maitland Valley Conservation Authority, 2024
© Upper Thames River Conservation Authority, 2024
© Grand River Conservation Authority, 2024
© Ausable Bayfield Conservation Authority, 2024