



# MANUFACTURING

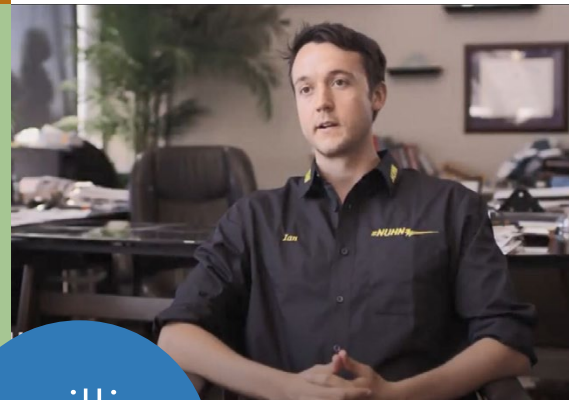
Perth County's advanced manufacturing sector is thriving with innovation.

From automotive components to full-sized robotic lagoon crawlers – our companies do it all.



*“Everything is made here in Perth County. We ship to Russia, California, British Columbia and globally... and we're growing another 50%.”*

IAN VICE PRESIDENT & BUSINESS OWNER

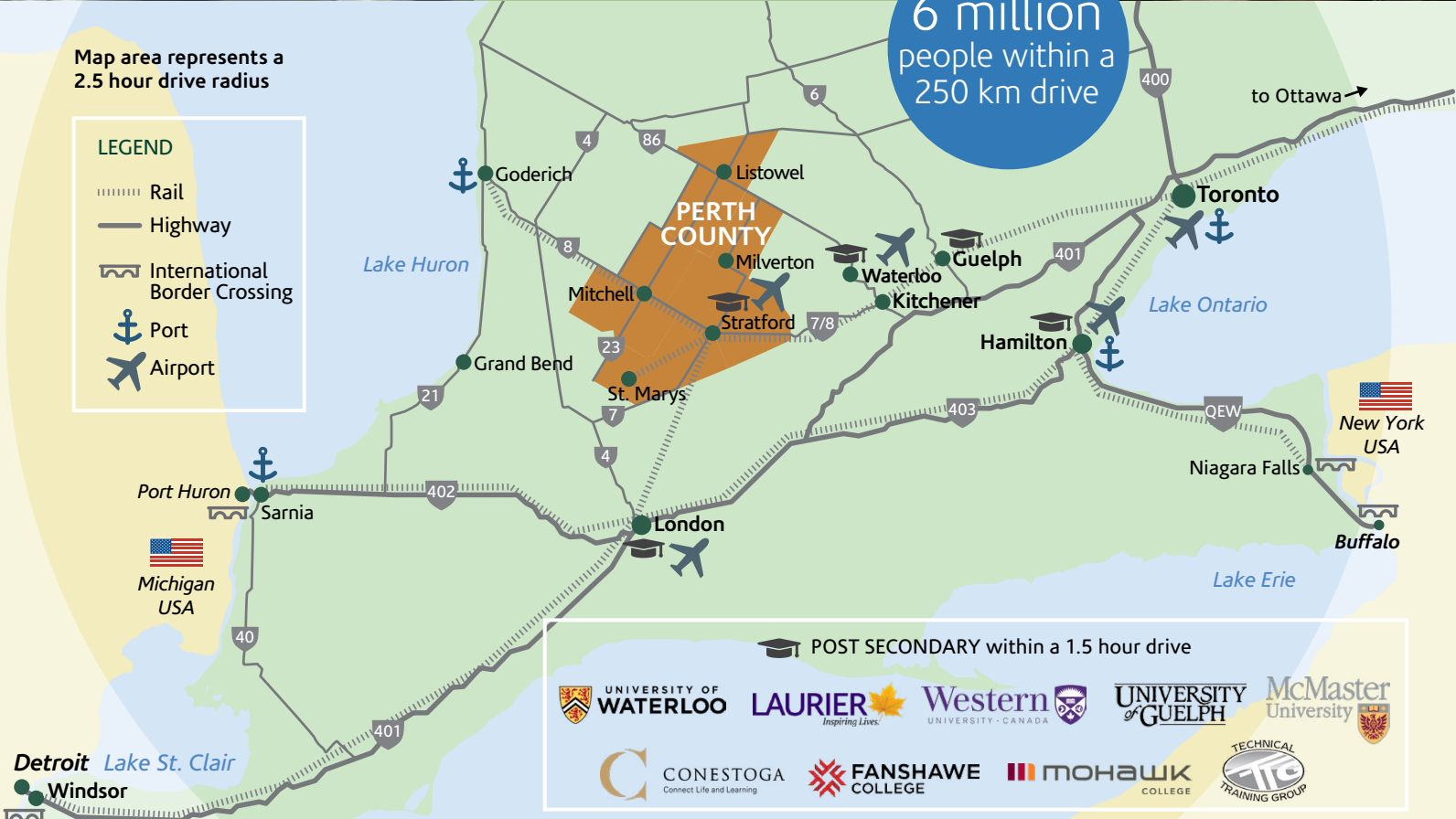


6 million people within a 250 km drive

Map area represents a 2.5 hour drive radius

**LEGEND**

- Rail
- Highway
- International Border Crossing
- Port
- Airport



POST SECONDARY within a 1.5 hour drive

## Doing Business in Ontario

**142 million consumers**

within a day's drive

Daily two-way goods trade between Ontario and US

**\$966 million CDN**

**Population 14.5 million**

If Ontario were a US state, it would rank 5th by population



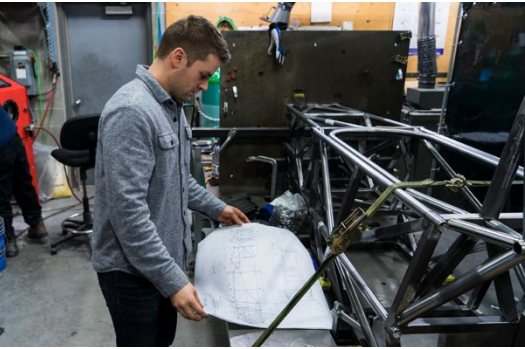
Ontario accounts for over 43% of Canada's total manufacturing employment

Ontario's manufacturers are responsible for over **46% of Canada's total manufacturing output**



Ontario's manufacturing industry generates annual sales of approximately

**\$270 billion**



## Cultivating Opportunity in Perth County

**100+**

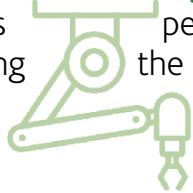
different types of manufacturing businesses in Perth County

**8,000+**

people work in the manufacturing sector

**340+**

small and medium-large businesses in the manufacturing sector



**11.5%**

of Perth County's labour force works in the manufacturing sector



**10 minutes** average commute time

Employer health costs per year for a typical firm are **one third the cost of the U.S. average**

### LOCAL MANUFACTURING



Contact us today. **Your business is our pleasure!**

We invite you to contact Perth County's economic development and tourism office. We can provide you with the guidance you need to locate and grow in Perth County.

Perth County Economic Development and Tourism Office  
1 Huron Street, Stratford, ON N5A 5S4  
t 519-271-0531 ext 150 e ecdev@perthcounty.ca

**perthcounty.ca**  