



OUR WORKFORCE

A hardworking, dedicated and skilled workforce is at the heart of Perth County.

42,510
TOTAL WORKFORCE



“Working in a small town like this is awesome...my commute is lovely, and the community is great.”

WILL QUALITY ASSURANCE ANALYST

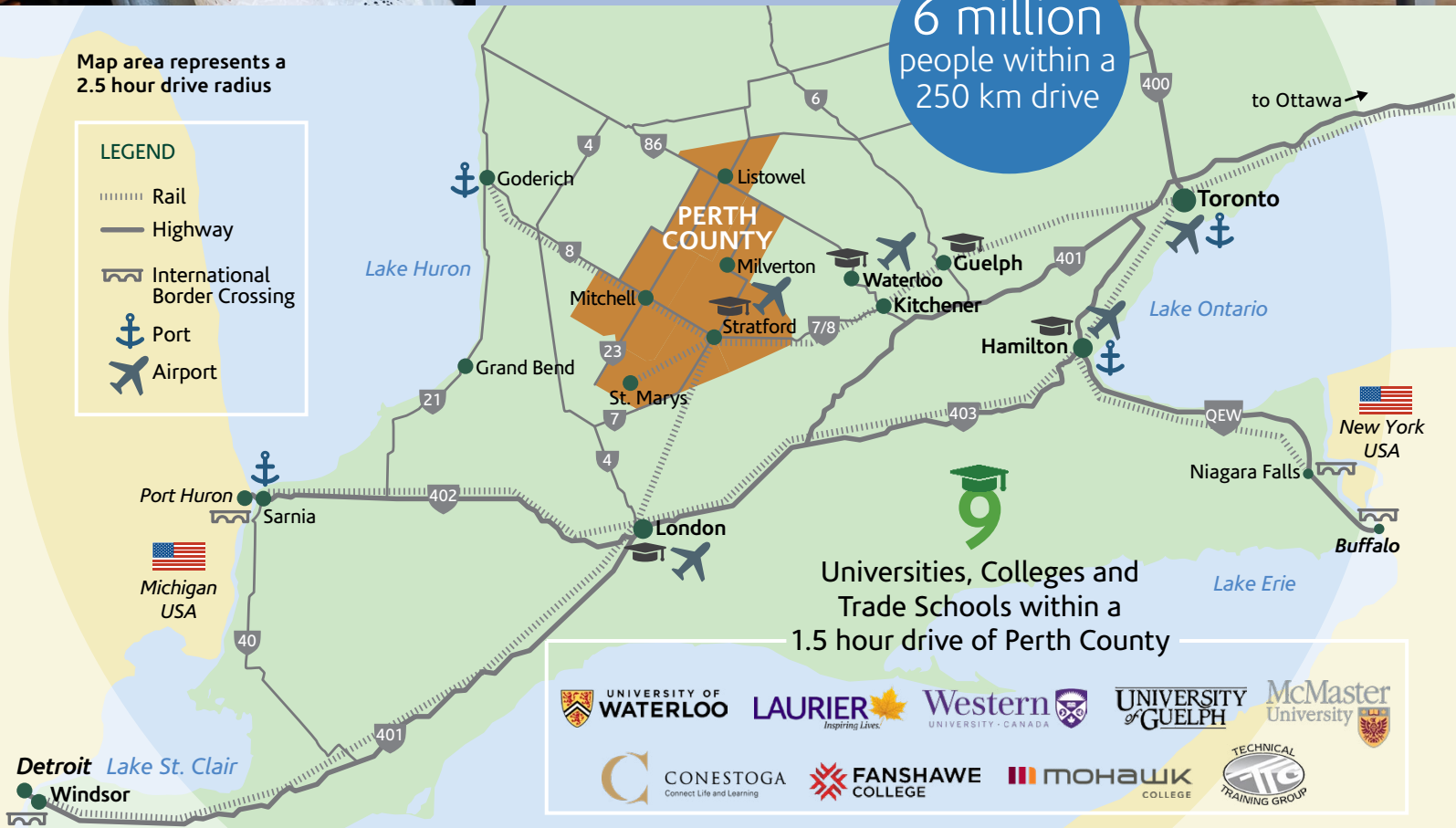


6 million people within a 250 km drive

Map area represents a 2.5 hour drive radius

LEGEND

- Rail
- Highway
- International Border Crossing
- Port
- Airport



Universities, Colleges and Trade Schools within a 1.5 hour drive of Perth County



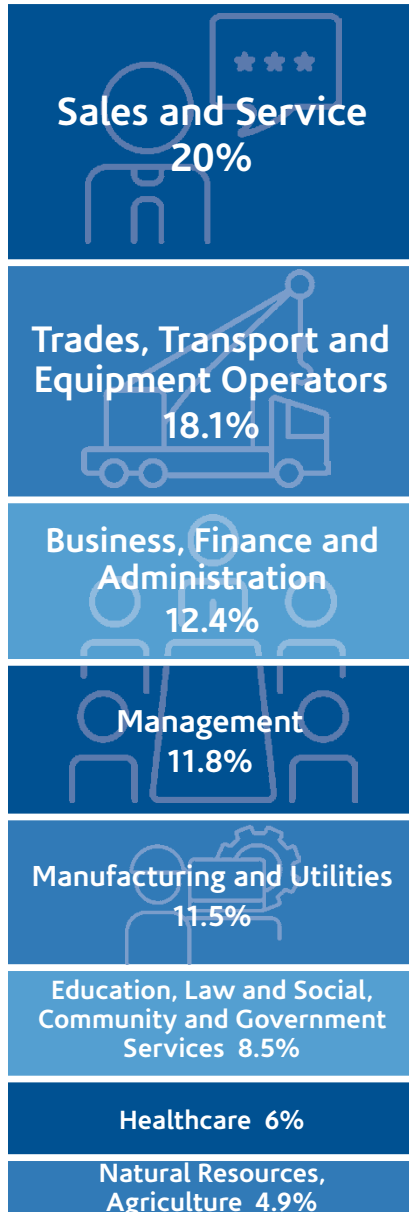
Labour Force Participation

	Participation	Employment	Unemployment
PERTH COUNTY	69.8%	67.0%	4.0%
ONTARIO	64.7%	59.9%	7.4%



10 minutes
average commute time
in Perth County

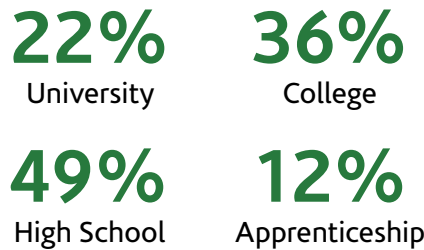
Labour Force by Occupation



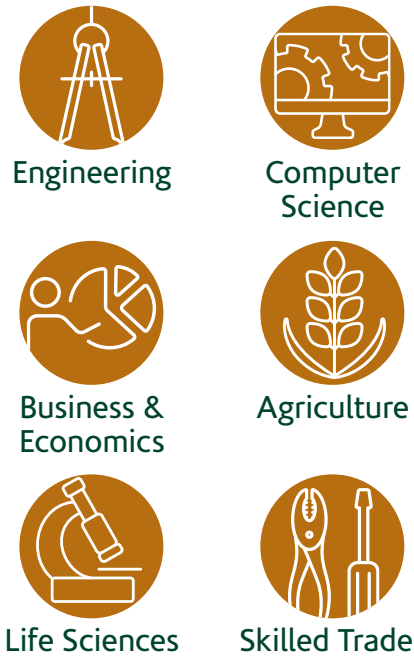
Educational | Post-Secondary Attainment



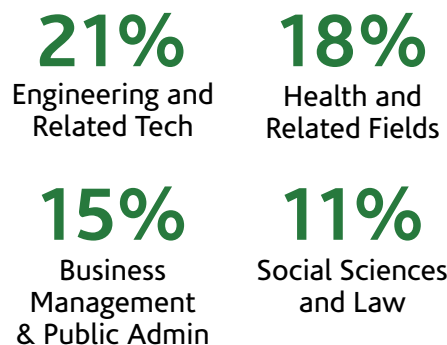
Education Level Attained



Top University & College Programs



Major Field of Study



TOP RESEARCH INSTITUTES
Engineering, Advanced Manufacturing, Agriculture, Food Processing

Contact us today. **Your business is our pleasure!**

We invite you to contact Perth County's economic development and tourism office. We can provide you with the guidance you need to locate and grow in Perth County.

Perth County Economic Development and Tourism Office
1 Huron Street, Stratford, ON N5A 5S4
t 519-271-0531 ext 150 e ecdev@perthcounty.ca

perthcounty.ca