

Municipal

Stratford-Perth Archives, Campbell Family Photograph Collection



3001 Allan Donald Cameron (1875-1944) in 1924. He was the clerk-treasurer of Mitchell in 1911-1913 and its mayor from 1922 to 1927.

Stratford-Perth Archives, Campbell Family Photograph Collection



3002 Mitchell's town council in the early 1940s. Standing, from left: Alvin Jordan, Arthur Robinson, Arthur W. Blowes (clerk-treasurer 1924-1948), Ernie Harris and Dinty Moore. Sitting, from left: Harold Cook, George Ronnenberg (mayor 1939-1945), Jack Vosper (reeve 1939-1953) and Bill Hoflich.

Stratford-Perth Archives, Campbell Family Photograph Collection



3003 Mitchell's town council in 1950. From left: Claude Horn, F. Adair [Baldy] Campbell, Arnold Gloor, Arthur Robinson, William H. Hoflich, John J. Vosper (reeve), Harold A. Cook (mayor), Alvin D. Jordan (clerk-treasurer) and Ernie R. Harris. The photo was taken in the council chambers, in the basement of the town library, on the southeast corner of Quebec and St. Andrew streets.

Stratford-Perth Archives, Campbell Family Photograph Collection



3004 Mitchell's town council in 1952. Standing, from left: Howard Dungey, Harold A. Cook, Alvin D. Jordan (clerk-treasurer), Jack B. Sorensen and F. Adair [Baldy] Campbell. Sitting, from left: Arthur E. Robinson, John J. Vosper (reeve), Claude Horn (mayor) and William H. Hoflich.

Stratford-Perth Archives, Campbell Family Photograph Collection



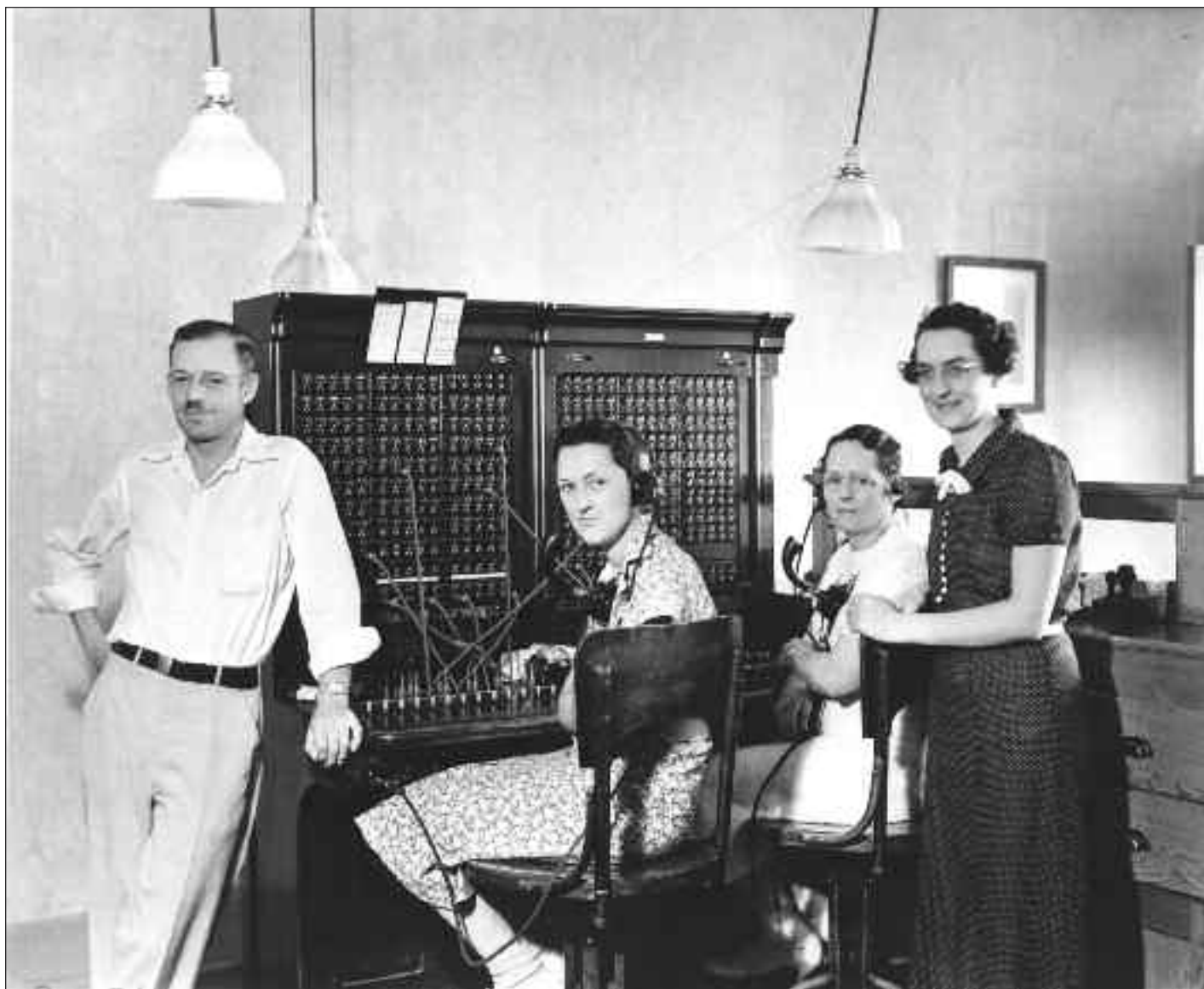
3005 Mitchell's town council in 1961. Standing, from left: F. Adair [Baldy] Campbell, Floyd Clarke, Lorne Aitchison and Norman Walt. Sitting, from left: Howard Dungey, John J. Vosper (reeve), Hugh Edighoffer (mayor), Herbert H. Homuth (clerk-treasurer) and Floyd Wassmann.

Stratford-Perth Archives, Campbell Family Photograph Collection



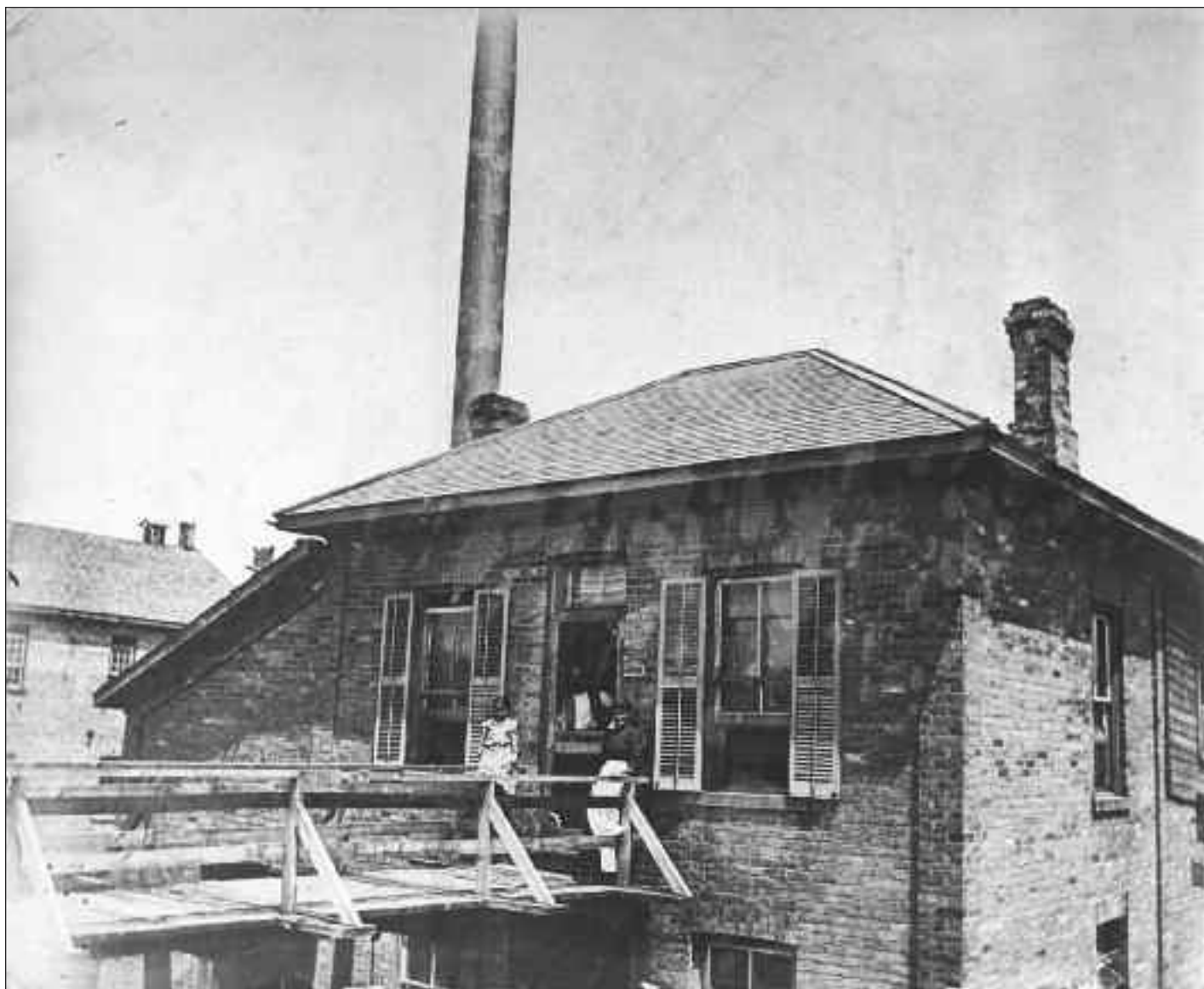
3006 Bert Croome, Mitchell chief of police from 1943 to 1952.

Stratford-Perth Archives, Campbell Family Photograph Collection



3007 From 1922 to 1941, Arthur W. (Bud) Blowes was manager of the Mitchell branch of the Bell Telephone Co. With him in this photo, from left: operators Gladys Morey, Tena Winteringham and Anna Davidson.

Stratford-Perth Archives, Campbell Family Photograph Collection



- 3008** The powerhouse northeast of the Ontario Road bridge over the Thames River in Mitchell was also a residence for whoever was in charge of running the steam-powered electrical plant. At around the turn of the century, that was Richard Harris. At right in this photo is his wife Mary and to the left their daughter Hattie. Their son Carl is behind the screen door. The catwalk to that door led from Ontario Road, just east of the bridge.

Stratford-Perth Archives, Campbell Family Photograph Collection



3009 Mitchell railway station staff in the 1920s. From left: clerk Charlie Whity (Whitty), Irene Brooks and station agent
(2) William A. (Alf) Abray. In 1929, Abray was voted the town's mayor.

Stratford-Perth Archives, Campbell Family Photograph Collection



3010 The arrival of a train at the second of Mitchell's three railway stations. Built about 1870, this building burned on
(2) Aug. 14, 1918.

Stratford-Perth Archives, Campbell Family Photograph Collection



3011 This is Mitchell's town hall, which was moved in 1905 from market square to this location, on the northeast corner of the intersection of St. George and Quebec streets. Its front tower contains a bell. The rear tower was used for drying hoses belonging to the fire department.

Stratford-Perth Archives, Campbell Family Photograph Collection



3012 An assortment of cars and people in market square. The post office was built in 1910-1911. Beyond the post office to the left, is the Mitchell library, which was erected in 1910. Beyond the post office to the right is Trinity Anglican Church. This scene changed considerably upon the construction of the town's cenotaph in 1919.

Stratford-Perth Archives, Campbell Family Photograph Collection



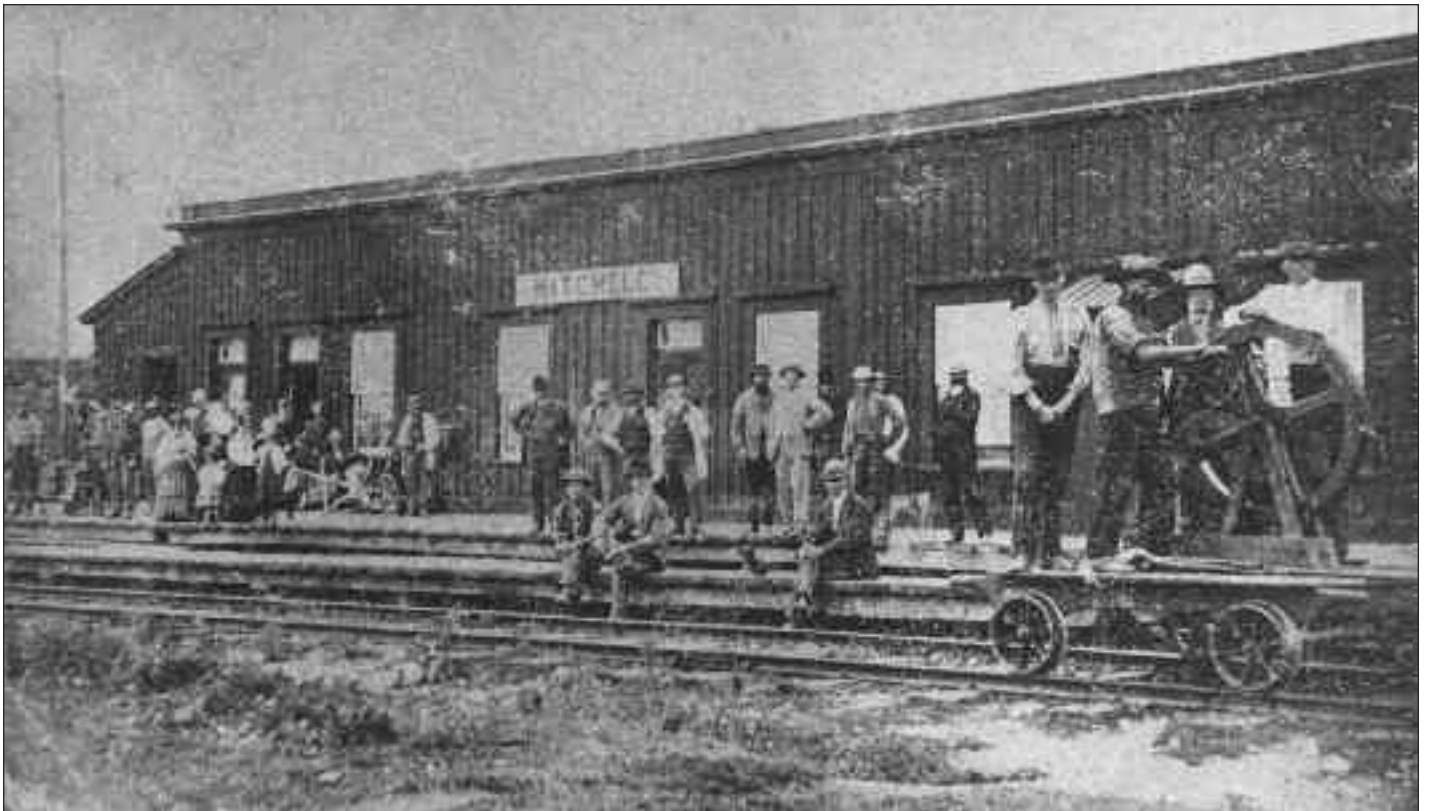
- 3013** Looking southerly across market square, this is the Mitchell post office, built in 1910-1911 and demolished in 1974.
- (2) Beyond the post office to the left, is the Mitchell library, which was erected in 1910. Beyond the post office to the right is Trinity Anglican Church. This scene changed considerably upon the construction of the town's cenotaph in 1919.

Stratford-Perth Archives, Campbell Family Photograph Collection



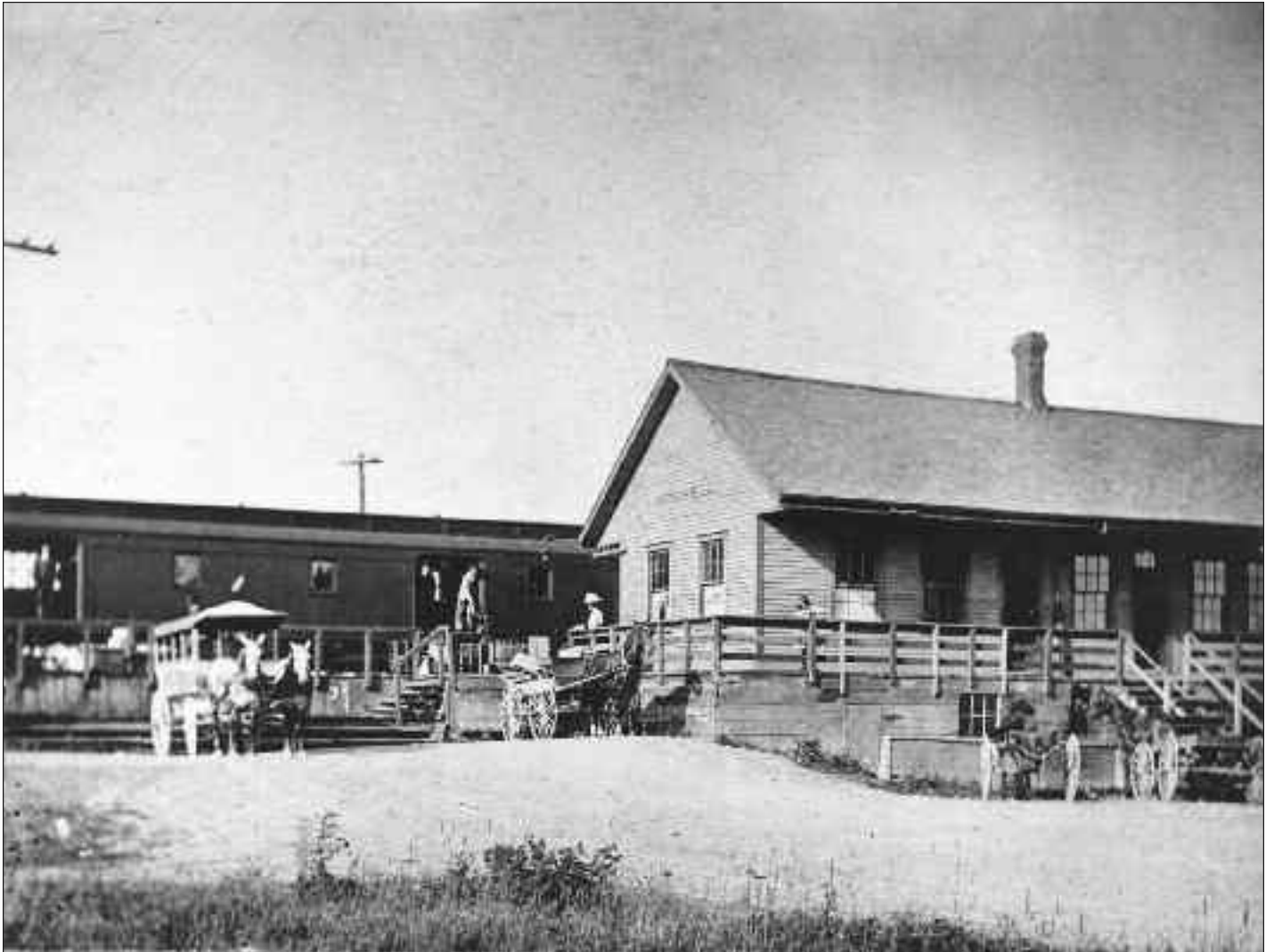
- 3014** Notes with this photo say this is the first train (Buffalo and Lake Huron Railway Co.) to come into Mitchell (from Stratford) – in 1861. The dominant building in this photo is certainly the first of three railway stations in Mitchell, but the first train to roll into town did so in 1857 or 1858. The photo was likely taken in 1861, but it is unlikely this is the first train to stop in Mitchell.

Stratford-Perth Archives, Campbell Family Photograph Collection



- 3015** Notes with this photo say the men gathered here (with members of their families) at the Mitchell freight sheds were some of the crew laying railway tracks in 1860. The railway reached Mitchell from the east in 1857 or 1858, so this photo may have been taken earlier than 1860.
- (3)**

Stratford-Perth Archives, Campbell Family Photograph Collection



- 3016** Activity at the Mitchell station, upon the arrival of a train in the late 1800s. This station, the second of three in Mitchell, was built in about 1870. It burned in August 1918. The wagon on the left belonged to the Hicks House and was used to transport hotel patrons to and from the railway station.
- (4)**

Stratford-Perth Archives, Campbell Family Photograph Collection



3017 Looking north across the Canadian National Railway Park, created in 1924 on the southeast corner of the intersection of Georgina and St. Andrew streets – north of the railway tracks, east of the railway station and west of the feed mill and coal elevator. The CNR and the town worked together to create the park, which featured a drinking fountain donated by Mary (Mrs. T. S.) Ford. The railway provided many of the flowers and shrubs. Others were donated by the Mitchell Nursery, Richard Thorne and Harry Eisler. As well, the town’s aging bandstand was refurbished and moved to the southeast corner of the new park. When a new bandstand was built at market square, by the town’s main intersection, this one was moved first to Keterson Park, then to the Ford park. There is some question as to where the “Ford park” was located. It might well have been the land on which the lawn bowling greens were built – land purchased by T. S. Ford and later donated by him to the Mitchell Lawn Bowling Club. Anyway, the bandstand came from the Ford park to here, where it remained until it was demolished in 1957.

Stratford-Perth Archives, Campbell Family Photograph Collection



- 3018 (2)** Looking west across the Canadian National Railway Park, created in 1924 on the southeast corner of the intersection of Georgina and St. Andrew streets – north of the railway tracks, east of the railway station (in the background) and west of the feed mill and coal elevator. The CNR and the town worked together to create the park, which featured a drinking fountain donated by Mary (Mrs. T. S.) Ford. The railway provided many of the flowers and shrubs. Others were donated by the Mitchell Nursery, Richard Thorne and Harry Eisler. As well, the town's aging bandstand was refurbished and moved to the southeast corner of the new park. When a new bandstand was built at market square, by the town's main intersection, this one was moved first to Keterson Park, then to the Ford park. There is some question as to where the "Ford park" was located. It might well have been the land on which the lawn bowling greens were built – land purchased by T. S. Ford and later donated by him to the Mitchell Lawn Bowling Club. Anyway, the bandstand came from the Ford park to here, where it remained until it was demolished in 1957.

Stratford-Perth Archives, Campbell Family Photograph Collection



3019 In the fall of 1924, more than 1,000 residents joined civic officials and dignitaries in officially opening the Canadian National Park, adjacent to the railway tracks, just west of the feed mill and coal elevator. The CNR and the town worked together to create the park, which featured a drinking fountain donated by Mary Ford. The railway provided many of the flowers and shrubs. Others were donated by the Mitchell Nursery, Richard Thorne and Harry Eisler. As well, the town's aging bandstand was refurbished and moved to the southeast corner of the new park. When a new bandstand was built at market square, by the town's main intersection, this one was moved first to Keterson Park, then to the Ford park. There is some question as to where the "Ford park" was located. It might well have been the land on which the lawn bowling greens were built B land purchased by T. S. Ford and later donated by him to the Mitchell Lawn Bowling Club. Anyway, the bandstand came from the Ford park to here, where it remained until it was demolished in 1957. Some of those taking part in the park's opening-day's events were, from left: Allan D. Cameron (mayor), John Broderick, James A. Meyers (principal of Mitchell Public School), Albert J. Blowes (secretary of the Mitchell Horticultural Society), Harry Eisler, Frederic A. Moses, John Goforth, Robert J. Keeler, Harry Chapman, Samuel R. Stuart, Thomas Symons Ford and W. A. [Alf] Abray (station agent).

Stratford-Perth Archives, Campbell Family Photograph Collection



3020 This is Mitchell's first indoor arena, which in the winter months featured a natural ice surface for skating and hockey. The rink, which ran parallel to Huron Road (east west), was south of the foundry located on the southeast corner of Huron Road and Blanshard Streets. It's main entry (shown here) was off Blanshard Street, not far from where Victoria Street meets Blanshard Street. At the rear of the building was the Thames River. This building, deemed unsafe, in about 1950, was torn down.

Stratford-Perth Archives, Campbell Family Photograph Collection



3021 In August 1919, the Porterfield and Colquhoun monument works began construction of an 18-foot war memorial in Mitchell's market square. The cenotaph was designed to honour the 67 people from Fullarton, Hibbert and Logan townships, as well as those from Mitchell, who had died in the First World War. The town and the three townships shared the cost of the cenotaph. For its contribution, Mitchell took out a \$2,500 debenture. In 1921 the site was adorned with a curb, railing and lights. The lights were turned on for the first time on Nov. 11 of that year. At the end of the Second World War, 28 more names were added to the memorial. This photo is of the dedication ceremony for the cenotaph, possibly on Nov. 11, 1919.

Stratford-Perth Archives, Campbell Family Photograph Collection



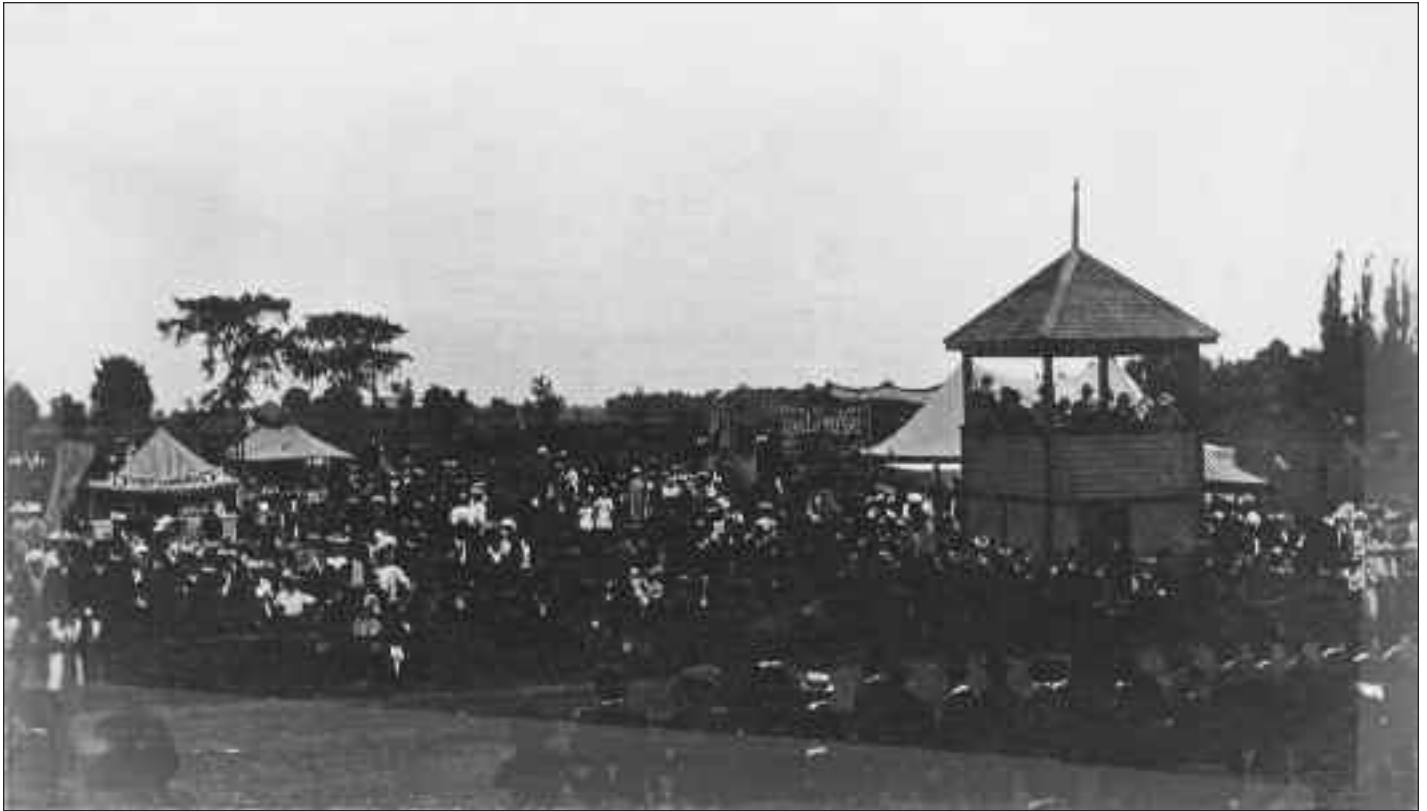
3022 Public Utilities Commission employee John McDermott, at about 19 years of age, stands beside the commission's
(2) first truck, in about 1922.

Stratford-Perth Archives, Campbell Family Photograph Collection

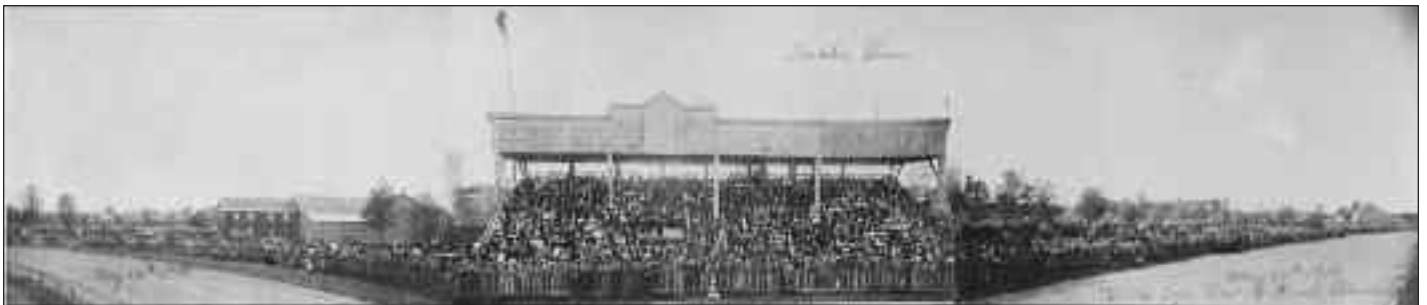


- 3023** Mitchell firemen pose with their trucks on the south side of Ontario Road in about 1928. From the left: Jack (3) Bennett and Bert Kempstone (both seated in the 1928 Lorne truck), Walter Bennett, Bill Bennett, Jack Edmonds, Frank Ruston, Herb Berry, Wilf Ratz, Charlie Robinson, Harold Cook, G. E. Graham and August E. Ott (the latter two in the 1914 truck). For many years the fire department was at 46 Ontario Road. The reason for this gathering may have been delivery of the new truck.

Stratford-Perth Archives, Campbell Family Photograph Collection

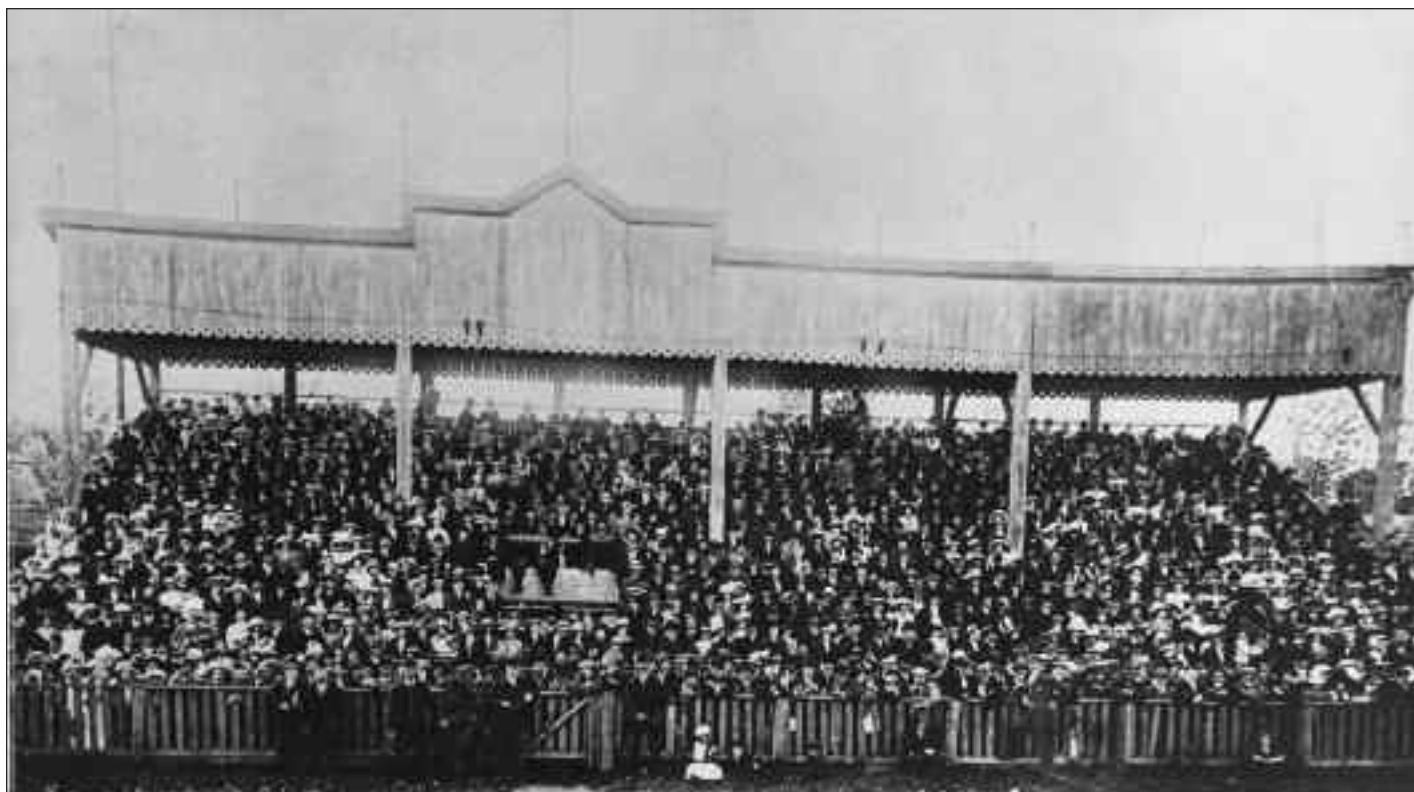


3024 The judges stand, some tents and hundreds of people at Keterson Park for Mitchell's fair in 1907. The banner across the tent on the left reads "Hot Lunch 5 cents."



3025 Some creative photography was used to produce this view of a jammed grandstand and the racetrack at Mitchell's Keterson Park on Saturday, May 24, 1913. The occasion was likely the town's celebration of Queen Victoria's birthday.

Stratford-Perth Archives, Campbell Family Photograph Collection



3026 The jammed grandstand adjacent to the racetrack at Mitchell's Keterson Park on Saturday, May 24, 1913. The occasion was likely the town's celebration of Queen Victoria's birthday.

Stratford-Perth Archives, Campbell Family Photograph Collection



3027 The Crystal Palace, on the northeast corner of the intersection of Waterloo and Wellington streets (the southwest corner of Keterson Park), as it looked in 1950. This version of the palace was built in 1917 at a cost of \$3,500, after fire had destroyed its predecessor. To the left in this photo is the agricultural society's judges stand, on the inside rail of the racetrack.

Stratford-Perth Archives, Campbell Family Photograph Collection



3028 On Sept. 29, 1954, Ontario premier Leslie Frost (left) was in Mitchell to cut a ribbon and officially open the Mitchell Agricultural Society's newly built centennial gates. Joining him in the ceremony were, from left: Ken Reaney, secretary-treasurer of the Mitchell Agricultural Society, F. Adair [Baldy] Campbell, mayor; and Fred Edwards, Member of the Provincial Parliament for Perth County.

Stratford-Perth Archives, Campbell Family Photograph Collection



3029 Mitchell's Public Utilities Commission employees and commissioners pose in front of the Royal Hotel building in 1950. From left: Murray Hoffmeyer (apprentice), Harold [Curly] Jordan (apprentice electrician), George [Bud] Gray (commissioner), Dr. Hector A. Mutton (commissioner), Reg Gatenby (commission chairman), Marjorie Vosper (office staff), Clarke Moses (commission manager), Harold A. Cook (mayor), Lew Reaney (electrical superintendent), Jack McDermott (electrician), Melvin Elliott (labourer), and Robert Isaac (foreman). In 1933 the PUC bought the Royal Hotel and owned the property back to Montreal Street. That property included a tennis court where the liquor store parking lot is now. The commission leased apartments in the building to, among others, Clarke and Ina Moses, who lived there for 10 years. He was the PUC manager. Other apartments went to Verna Colquhoun and to Bob and Margaret Clarke. In those years the PUC sold electrical appliances and did wiring jobs. In 1964 it sold the building to Joe Cox, whose son Bill ran a men's wear store in it. The PUC offices and garage then moved to a new building at 132 St. George St., not far from the dam, where the old powerhouse had been.

Stratford-Perth Archives, Campbell Family Photograph Collection



3030 (2) Construction of a new substation just below the dam on the east side of the Thames River enabled the Public Utilities Commission to switch from a 25-cycle electrical service to 60 cycles (2,000 KVA). In the week of Dec. 20, 1951, close to 300 electrical workers converged on the town to change over the distribution system, the meters, the street lights, almost 2,000 household appliances, 793 commercial items and 537 industrial machines. When Lew Reaney and Bob Isaac pulled the switch to make the cut-over, the electrical service was interrupted for just 30 seconds. In the week before all of that took place, PUC, hydro and civic officials, as well as members of the media, were invited to tour the new facilities. Front row from left: Arthur E. Robinson, William Hoflich, Ethel Thiel (stringer for the Stratford Beacon-Herald and the London Free Press), Wanda Mounter (editor of the Mitchell Advocate), Reg Gatenby (PUC commission chairman), Dr. Hector A. Mutton and Clarke Moses (PUC manager). Back row from left: James Croden (consumer relations, Canadian Comstock of Seaforth), F. Adair [Baldy] Campbell, Maurice Anderson (manager, Mitchell Rural Hydro), Harold Cook, Jack Sorensen, Charles Grant (a foreman with one of the contractors), Howard Dungey, Claude Horn (mayor), John J. Vosper (reeve) and Alvin Jordan (clerk-treasurer).

Stratford-Perth Archives, Campbell Family Photograph Collection



3032 Construction of a new substation just below the dam on the east side of the Thames River enabled the Public Utilities Commission to switch from a 25-cycle electrical service to 60 cycles (2,000 KVA). In the week of Dec. 20, 1951, close to 300 electrical workers converged on the town to change over the distribution system, the meters, the street lights, almost 2,000 household appliances, 793 commercial items and 537 industrial machines. When Lew Reaney and Bob Isaac pulled the switch to make the cut-over, the electrical service was interrupted for just 30 seconds. In the week before all of that took place, PUC, hydro and civic officials, as well as members of the media, were invited to tour the new facilities. After the tour they dined at Bob Keyes' restaurant. From left: Reg Gatenby (PUC commission chairman), ???? and Claude Horn (mayor).

Stratford-Perth Archives, Campbell Family Photograph Collection



3033 Construction of a new substation just below the dam on the east side of the Thames River enabled the Public Utilities Commission to switch from a 25-cycle electrical service to 60 cycles (2,000 KVA). In the week of Dec. 20, 1951, close to 300 electrical workers converged on the town to change over the distribution system, the meters, the street lights, almost 2,000 household appliances, 793 commercial items and 537 industrial machines. When Lew Reaney and Bob Isaac pulled the switch to make the cut-over, the electrical service was interrupted for just 30 seconds. In the week before all of that took place, PUC, hydro and civic officials, as well as members of the media, were invited to tour the new facilities. The tour included the PUC's radio room. From left: ????, Arthur E. Robinson, Jack Sorensen, William Hoflich, Howard Dungey, mostly hidden Claude Horn (mayor), Harold Cook, seated ????, John J. Vosper (reeve) and Alvin Jordan (clerk-treasurer).

Stratford-Perth Archives, Campbell Family Photograph Collection



3034 When Bell Telephone opened its new building on the northeast corner of the intersection of Montreal and St. George streets in Mitchell in about 1960, the company held an open house to explain some of the new technology. Four students are identifiable in this photograph, beginning, from the left with Ross Baker (wearing dark-rimmed glasses), Jim Young (to the left of John Schutz), John Schutz (wearing a white t-shirt) and Charlie Robertson Jr. (to the right of John Schutz).

Stratford-Perth Archives, Campbell Family Photograph Collection



3035 Mitchell Lions, from left, F. Adair (Baldy) Campbell, Dave Eizerman and Arthur W. (Bud) Blowes stand behind a model of the Lions swimming pool and recreation park, which the club was proposing to build near the northeast corner of the intersection of Blenheim and Nelson streets in early 1950s.

Stratford-Perth Archives, Campbell Family Photograph Collection



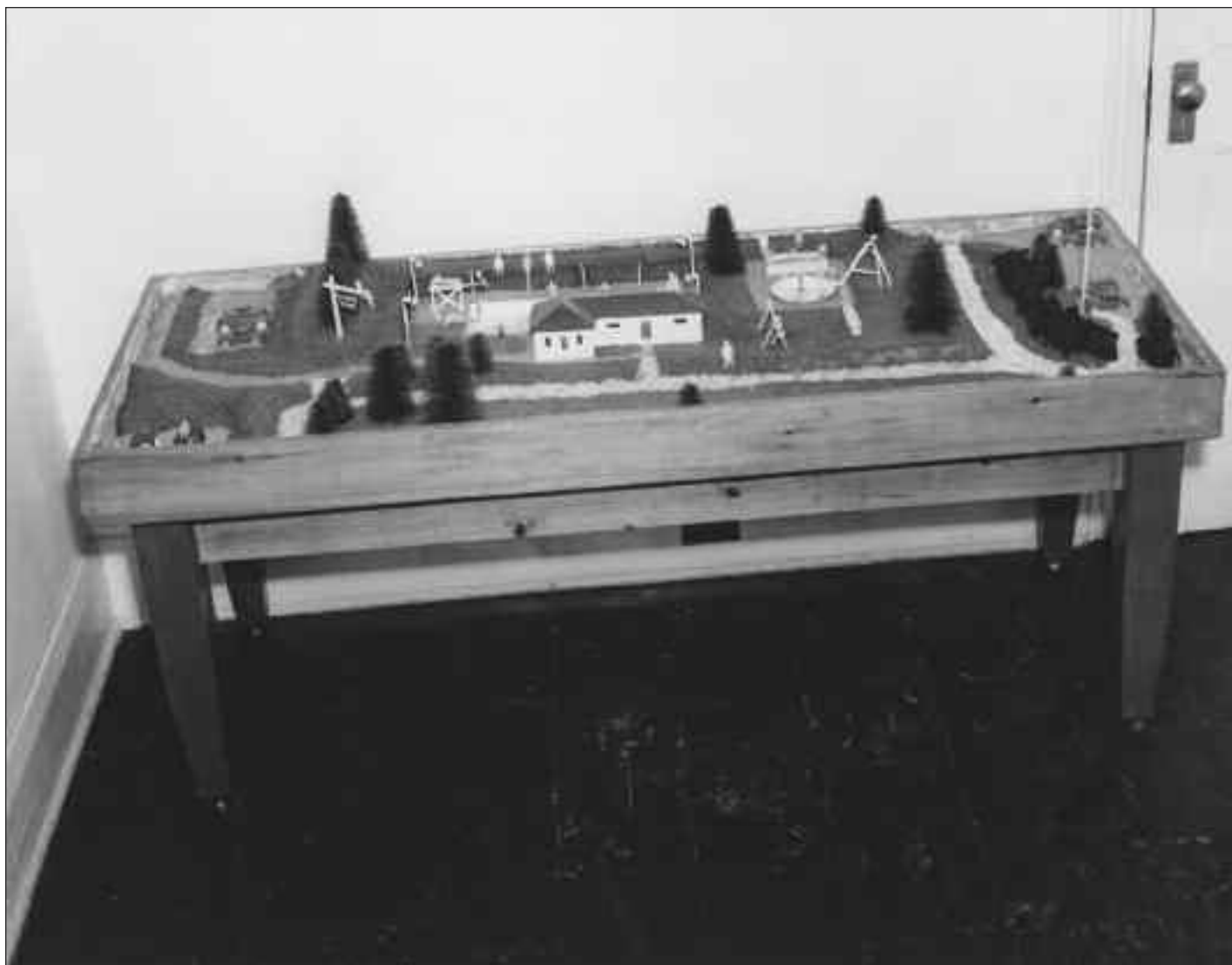
3036 Mitchell Lions, from left, F. Adair (Baldy) Campbell, Dave Eizerman and Arthur W. (Bud) Blowes admire a model of the Lions swimming pool and recreation park, which the club was proposing to build near the northeast corner of the intersection of Blenheim and Nelson streets in early 1950s.

Stratford-Perth Archives, Campbell Family Photograph Collection



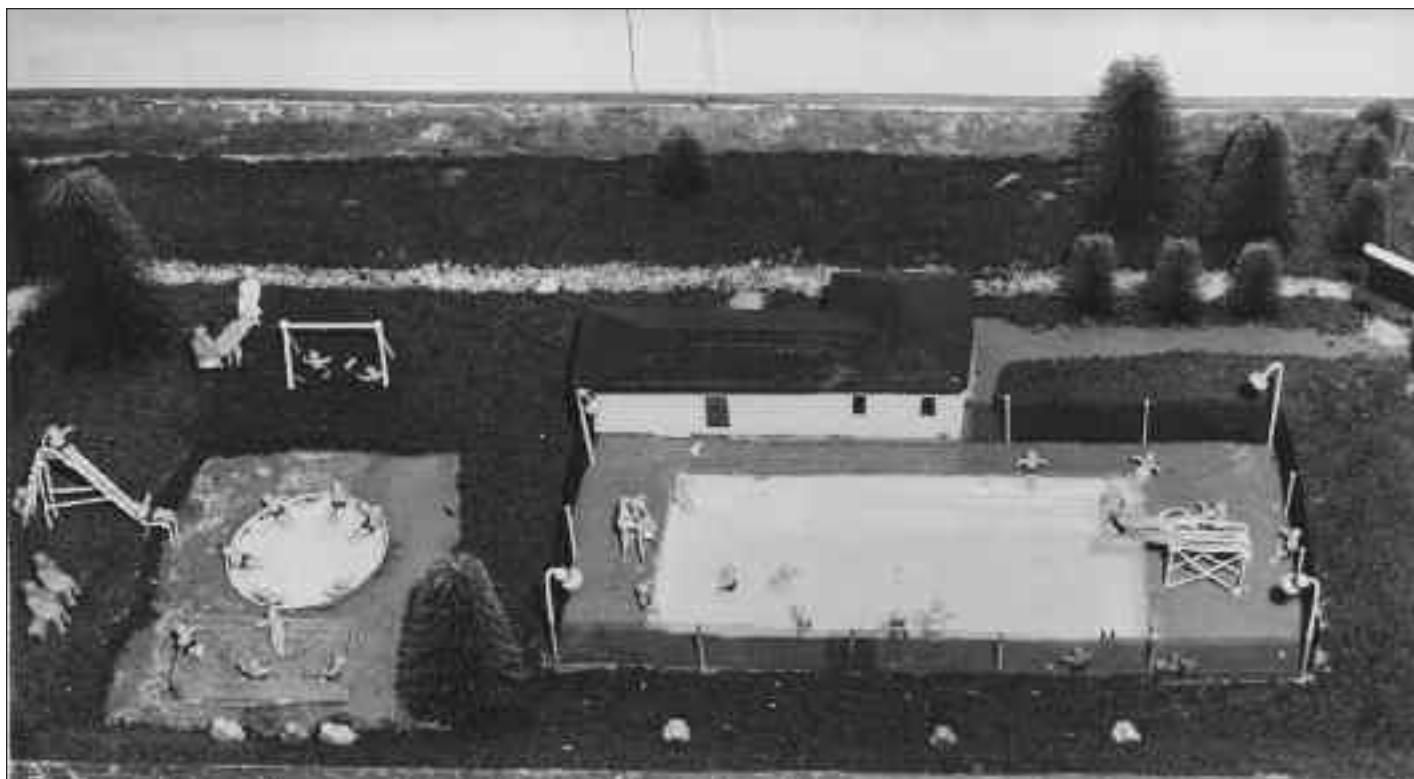
3037 A model of the swimming pool and recreation park proposed by the Mitchell Lions Club in the early 1950s.
(2) (longitudinal view)

Stratford-Perth Archives, Campbell Family Photograph Collection



3038 A model of the swimming pool and recreation park proposed by the Mitchell Lions Club in the early 1950s. (side view)

Stratford-Perth Archives, Campbell Family Photograph Collection



3039 A model of the swimming pool and recreation park proposed by the Mitchell Lions Club in the early 1950s. (close-up view from above)

Stratford-Perth Archives, Campbell Family Photograph Collection



3040 A power shovel and bulldozer do most of the heavy work on the downstream side of the new Mitchell dam on the Thames River. The photo, taken in November 1962, is from the east side of the construction site, looking to the west, towards Blenheim Street.

Stratford-Perth Archives, Campbell Family Photograph Collection



3041 Two power shovels and a bulldozer do most of the heavy work on the downstream side of the new Mitchell dam on the Thames River. The photo, taken in November 1962, is from the east side of the construction site, looking to the west, towards Blenheim Street and the Mitchell swimming pool.

Stratford-Perth Archives, Campbell Family Photograph Collection



3042 Two power shovels and a dump truck do most of the heavy work at the site of the new Mitchell dam on the Thames River. The photo, taken in November 1962, is from south of the construction site, probably from the Ontario Road bridge.

Stratford-Perth Archives, Campbell Family Photograph Collection



3043 A power shovel and a truck carrying concrete do most of the heavy work during construction of the new Mitchell dam on the Thames River in 1963. The photo is from south of the construction site, looking north.

Stratford-Perth Archives, Campbell Family Photograph Collection



3044 Two workmen busy themselves in the spillway of the new Mitchell dam in 1963 or 1964. The photo is from south of the dam, looking north onto the Thames River bed.

Stratford-Perth Archives, Campbell Family Photograph Collection



3045 A worker applies some finishing touches to the downstream face of the new Mitchell dam in 1963 or 1964. The photo is from southwest (downstream) of the dam.

Stratford-Perth Archives, Campbell Family Photograph Collection



3046 A crane lifts a control gate into place during construction of the new Mitchell dam in 1964. The view is from south (downstream) of the dam.

Stratford-Perth Archives, Campbell Family Photograph Collection



3047 Two unidentified officials walk along the east side of Mitchell's new centennial park on the northeast corner of Ontario Road and Blenheim Street on Aug. 7, 1967. It was on that day that Mitchell celebrated Canada's 100th birthday and dedicated its park, complete with a fountain and bell tower. For many years the brass bell had tolled atop Mitchell's former town hall.

Stratford-Perth Archives, Campbell Family Photograph Collection



3048 It was on Feb. 29, 1952, that Mitchell and its neighbouring townships officially opened their first artificial ice arena, at the north end of Keterson Park. The idea for a new rink came from members of the Mitchell branch of the Royal Canadian Legion, who wanted it to be a memorial to their fallen comrades. The town bought the 2,200-seat, 225-by-98-foot steel Quonset-type structure for \$11,000 from Orillia. It was dismantled in that city and rebuilt on the east side of Wellington Street at the east end of Rowland Street. This is a view of the arena looking north from near third base on the baseball diamond at Keterson Park.

Stratford-Perth Archives, Campbell Family Photograph Collection



3049 It was on Feb. 29, 1952, that Mitchell and its neighbouring townships officially opened their first artificial ice arena, at the north end of Keterson Park. The idea for a new rink came from members of the Mitchell branch of the Royal Canadian Legion, who wanted it to be a memorial to their fallen comrades. The town bought the 2,200-seat, 225-by-98-foot steel Quonset-type structure for \$11,000 from Orillia. It was dismantled in that city and rebuilt on the east side of Wellington Street at the east end of Rowland Street. This is a view of the arena looking southeasterly towards Keterson Park. The sidewalk parallels Roland Street as it approaches Wellington Street. The trees are on the northeast corner of what at the time were the grounds of Mitchell District High School.

Stratford-Perth Archives, Campbell Family Photograph Collection



3031 Construction of a new substation just below the dam on the east side of the Thames River enabled the Public Utilities Commission to switch from a 25-cycle electrical service to 60 cycles (2,000 KVA). In the week of Dec. 20, 1951, close to 300 electrical workers converged on the town to change over the distribution system, the meters, the street lights, almost 2,000 household appliances, 793 commercial items and 537 industrial machines. When Lew Reaney and Bob Isaac pulled the switch to make the cut-over, the electrical service was interrupted for just 30 seconds. In the week before all of that took place, PUC, hydro and civic officials, as well as members of the media, were invited to tour the new facilities. Here they check out new meters. Front row, from left: F. Adair [Baldy] Campbell, William Hoflich, Maurice Anderson (manager, Mitchell Rural Hydro), Dr. Hector A. Mutton, Reg Gatenby (PUC commission chairman), Jack Sorensen, Clarke Moses (PUC manager) and James Waddell (Hydro-Electric Power Commission of Ontario). Back row, from left: ????, ????, Alvin Jordan (clerk-treasurer), John J. Vosper (reeve), Howard Dungey and Claude Horn (mayor).

Stratford-Perth Archives, Campbell Family Photograph Collection



3050 It was on Feb. 29, 1952, that Mitchell and its neighbouring townships officially opened their first artificial ice arena, at the north end of Keterson Park. The idea for a new rink came from members of the Mitchell branch of the Royal Canadian Legion, who wanted it to be a memorial to their fallen comrades. The town bought the 2,200-seat, 225-by-98-foot steel Quonset-type structure for \$11,000 from Orillia. It was dismantled in that city and rebuilt on the east side of Wellington Street at the east end of Rowland Street. This view, looking easterly towards Keterson Park, is of the west side of the arena. The grass and expanse of grass and the trees are on the northeast corner of what at the time were the grounds of Mitchell District High School.