

County of Perth

Perth County

New Official Plan

New County Official Plan

Special Council Meeting

September 12, 2018



In association with





AGENDA

1. Purpose of Meeting
2. Project Team
3. Purpose of the Official Plan
4. Why a New Official Plan is Needed
5. Work Program
6. Communications and Engagement Strategy
7. Next Steps / Provide Your Input



PURPOSE OF MEETING

- The purpose of this Special Meeting of Council is to discuss potential revisions that may be required to the Perth County Official Plan and provide an opportunity for the public to offer comments to County Council regarding any issues or matters that should be considered in the preparation of the new Official Plan.
- Pursuant to the *Planning Act*, before making revisions to the Perth County Official Plan, the County is required to hold a Special Meeting of Council, open to the public, to discuss the revisions that may be required, and receive comments.
- Tonight's meeting is the first step to prepare a New Perth County Official Plan.

PROJECT TEAM



WSP (Lead)

- Project management
- Communications and Engagement
- Informal Reports and Issues and Options Report
- New Official Plan



Watson and Associates

- Growth Forecasts
- Residential, Commercial and Employment Land Needs Assessment



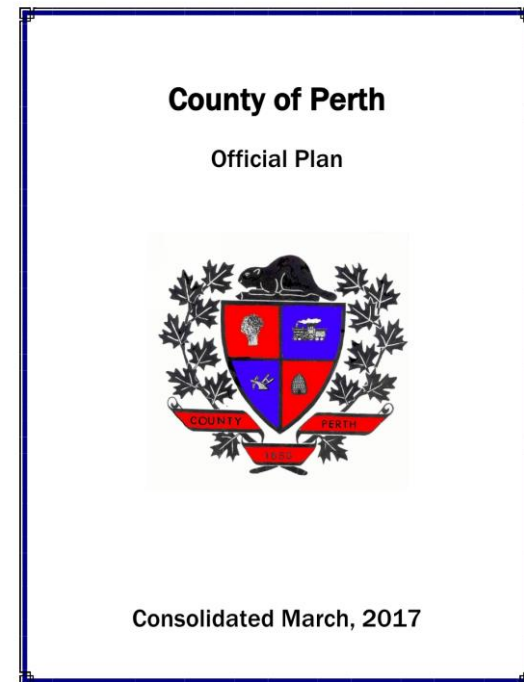


PURPOSE OF THE OFFICIAL PLAN

- An Official Plan outlines the goals, objectives and policies established primarily to manage and direct physical change and the effects on the social, economic, built and natural environment of the municipality... (*Planning Act*).
- An Official Plan lets the public know the municipality's general land use planning policies and helps them understand how their lands may be used, now and in the future.
- *Planning Act* states that: ...where an official plan is in effect, no public work shall be undertaken and no by-law shall be passed for any purpose that does not conform to the Official Plan.

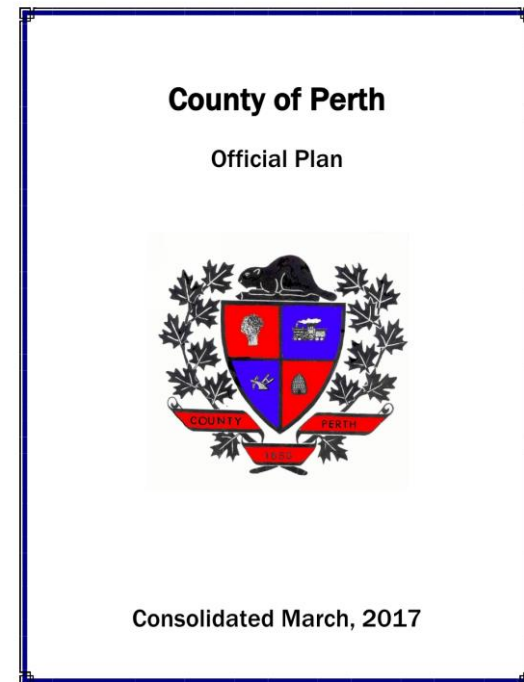
CURRENT COUNTY OFFICIAL PLAN

- County Official Plan was adopted by County Council in December 1997.
- Largely approved by the Province and OMB in June 1998 and March 1999, respectively.
- Replaced the Official Plan's of the former eleven Township's and the County.
- Applies to the entire County, with the Official Plan's of Listowel, Mitchell and Milverton wards providing detailed polices for the urban areas.



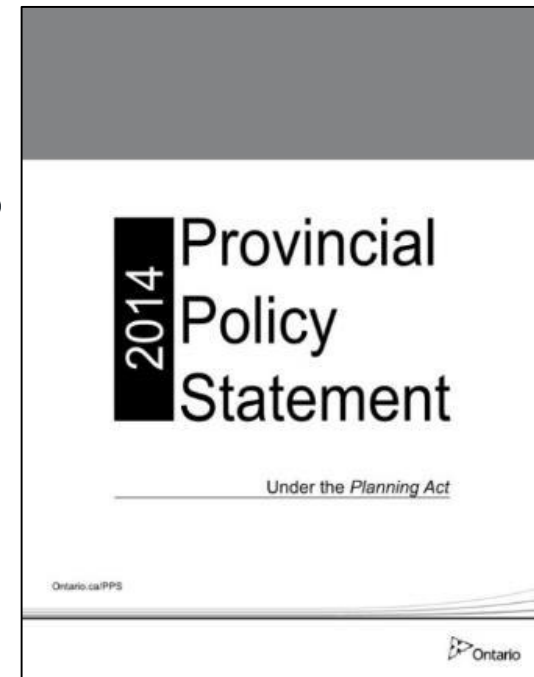
CURRENT COUNTY OFFICIAL PLAN

- Long range policy document (20 year planning horizon) that sets goals and objectives and detailed policies to implement these objectives.
- Directs and guides land use policy and physical planning on a County-wide basis.
- Policy framework for issues such as: growth, land use and development; resource management; protection of agricultural and natural areas; and hazard areas.



WHY A NEW OFFICIAL PLAN IS NEEDED

- Current County Official Plan approved March 1999 (*Planning Act* requires review/update every 5 years).
- Comprehensive review required to be consistent with the **Provincial Policy Statement, 2014**.
- Which provides policy direction on matters of provincial interest related to land use planning and development:
 - *Building Strong Healthy Communities*
 - *Wise Use and Management of Resources*
 - *Protecting Public Health and Safety*



WHY A NEW OFFICIAL PLAN IS NEEDED

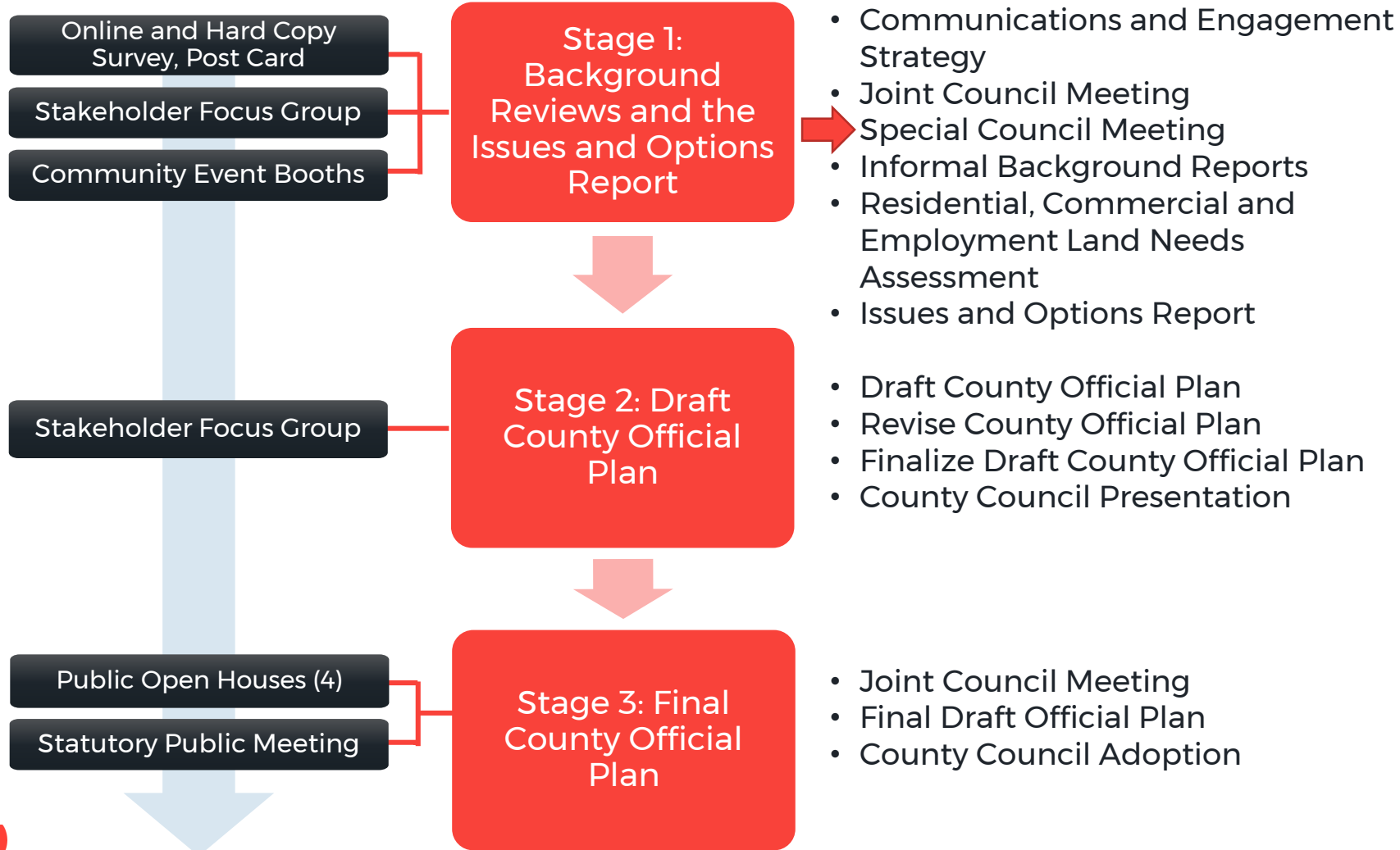
- Implement other recent Provincial policy and legislation, including:
 - *Province's Guidelines on Permitted Uses in the Agricultural Area*
 - *Minimum Distance Separation Guidelines*
 - *Source Protection Plans*
 - *Strong Communities Through Affordable Housing Act*
- Implement County Natural Heritage Study.
- Consolidate the local Official Plans for the three serviced urban areas of Listowel, Milverton and Mitchell.

WHY A NEW OFFICIAL PLAN IS NEEDED

- Population:
2001 – 37,706
2016 – 38,066
2021 – 41,214
- Evaluate alternative scenarios for growth and determine if there is justification for expansion of settlement area boundaries.
- New Official Plan will identify and allocate growth to a 20-year planning horizon.

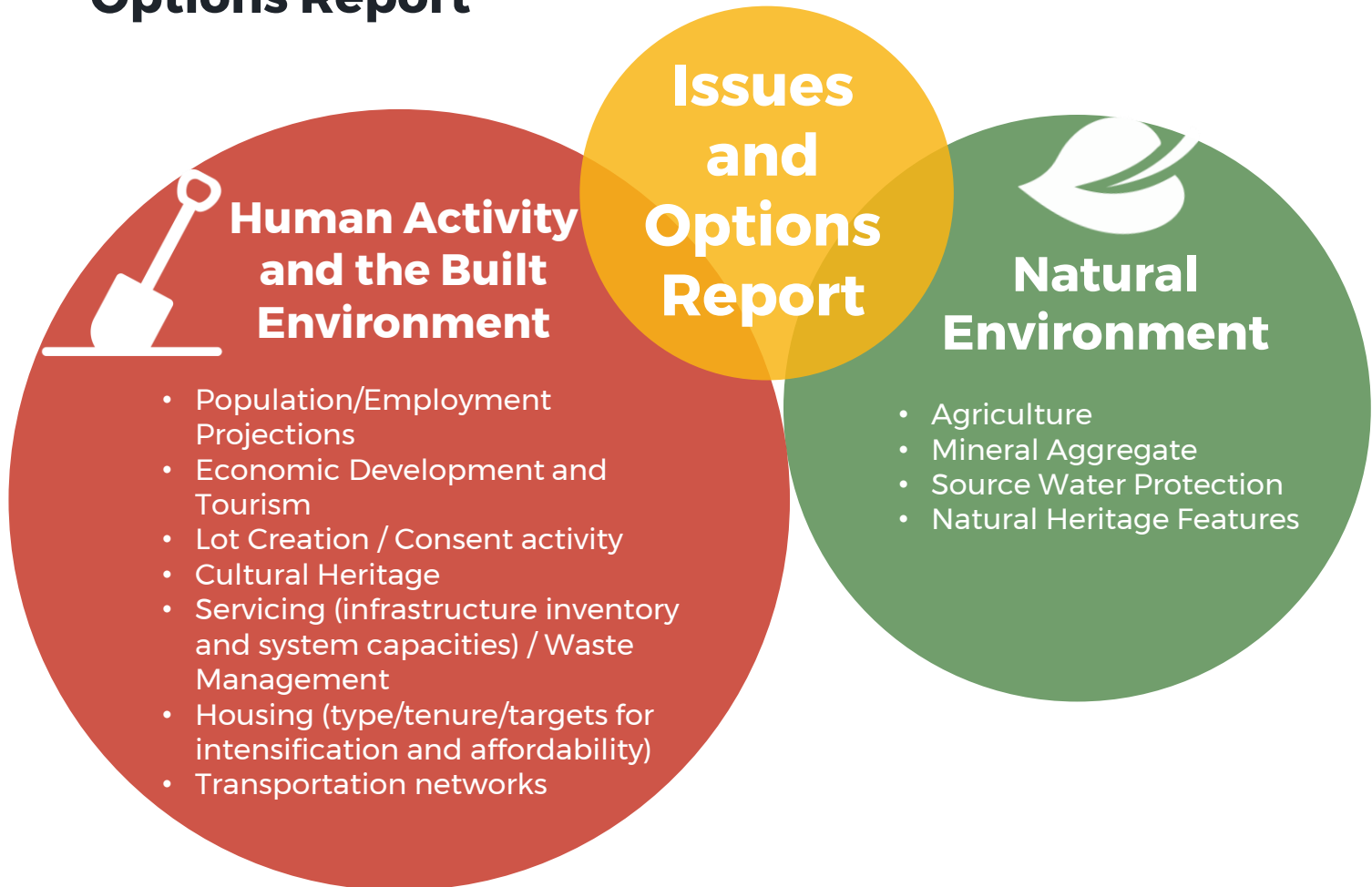


WORK PROGRAM



WORK PROGRAM

Informal Background Reports and Issues and Options Report



COMMUNICATIONS & ENGAGEMENT STRATEGY



CO-ORDINATION WITH ON-GOING STUDIES





NEXT STEPS

- Community Event Booths
 - *Mitchell Fair (held August 31)*
 - *Milverton Fair (September 14)*
- Informal Background Reports (Sept. 2018)
- Residential, Commercial and Employment Land Needs Assessment (Sept. 2018)
- Issues and Options Report (Oct. 2018)
- Presentation to Council (Jan. 2019)
- Draft new County Official Plan (2019)

Further public meetings will be held with respect to any proposed amendments to the County Official Plan.

PROVIDE YOUR INPUT

- Provide comments at tonight's meeting.
- Provide written to the address below.
- Visit the County's website for more information and to complete a survey: www.perthcounty.ca
- For further information, contact:

Allan Rothwell, MCIP, RPP, Director of Planning and Development
Corporation of the County of Perth

1 Huron Street Stratford, Ontario N5A 5S4

Phone: 519-271-0531 ext. 410

Email: arothwell@perthcounty.ca

OFFICIAL PLAN ISSUES...

- Growth management
- Land use
- Healthy communities
- Economic development
 - *employment areas*
 - *tourism*
 - *downtown business investment*
- Housing
- Agriculture
- Public spaces, recreation, parks, trails and open space
- Energy conservation /
 - climate change
- Natural heritage and environment
- Mineral and aggregate resources
- Natural hazards
- Cultural heritage
- Infrastructure
 - *water and wastewater servicing*
 - *transportation*
 - *community facilities and services*



Thank you!

Randall Roth, MCIP, RPP
Senior Project Manager, WSP
Randall.Roth@wsp.com
905-882-4211 ext. 6833

wsp.com

